
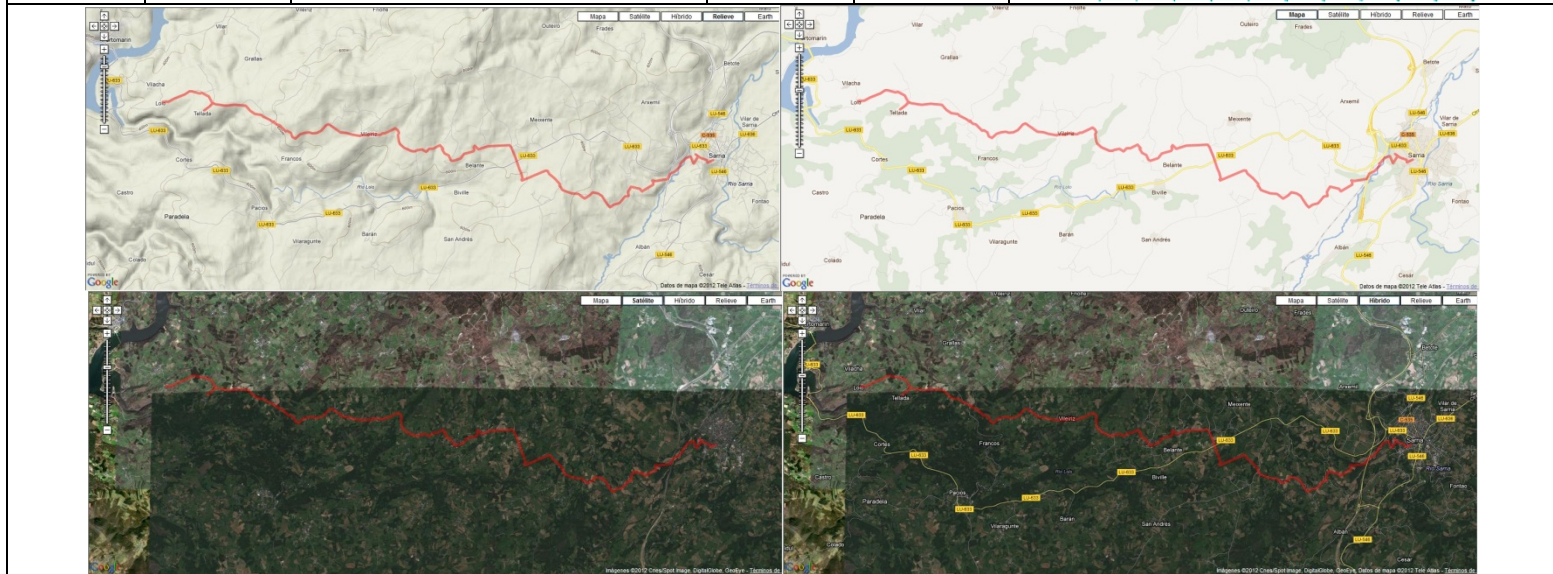
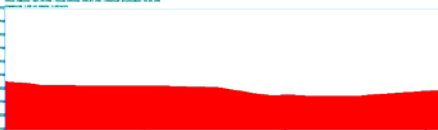



Etapa: Sarria a Melide

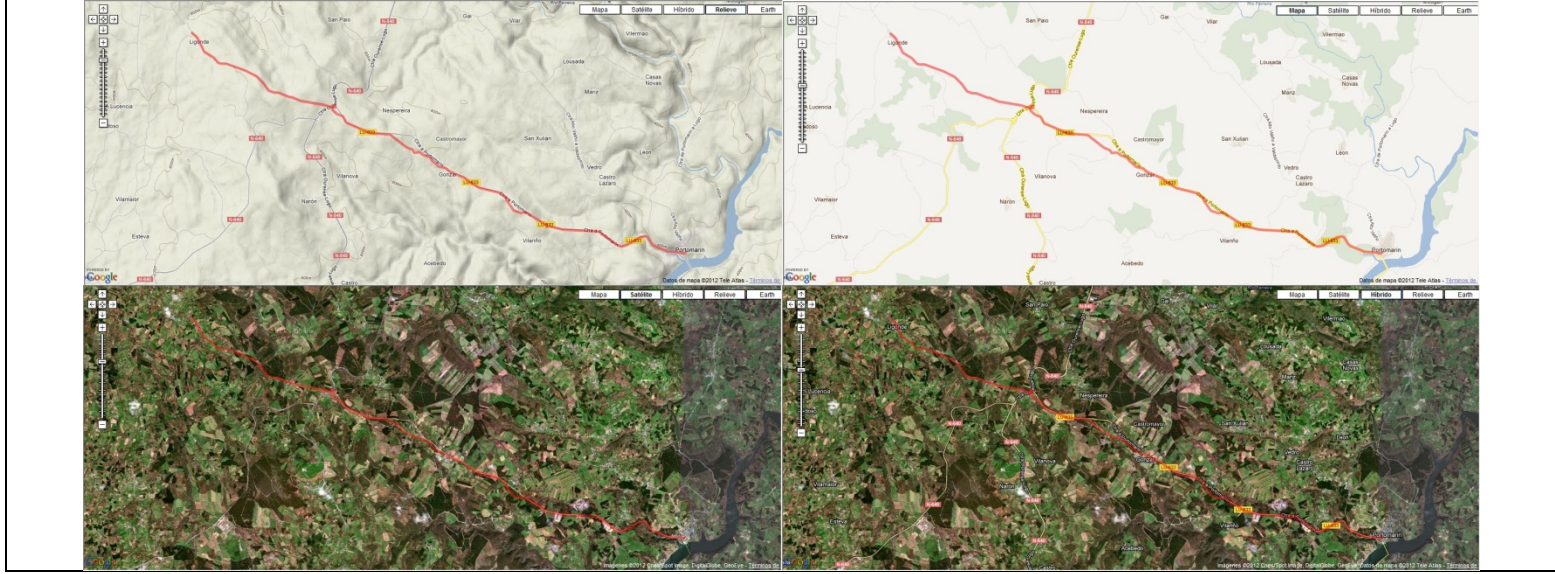
Horaris		Lloc	Quilometratges		Perfil
Hora	Temps		Parcials	Acumulat	
09:00	0	Sarria Loio	0	0	
11:00	2,00'		20,4	20,4	

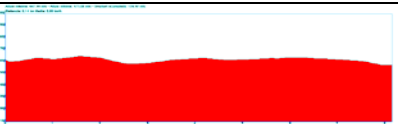


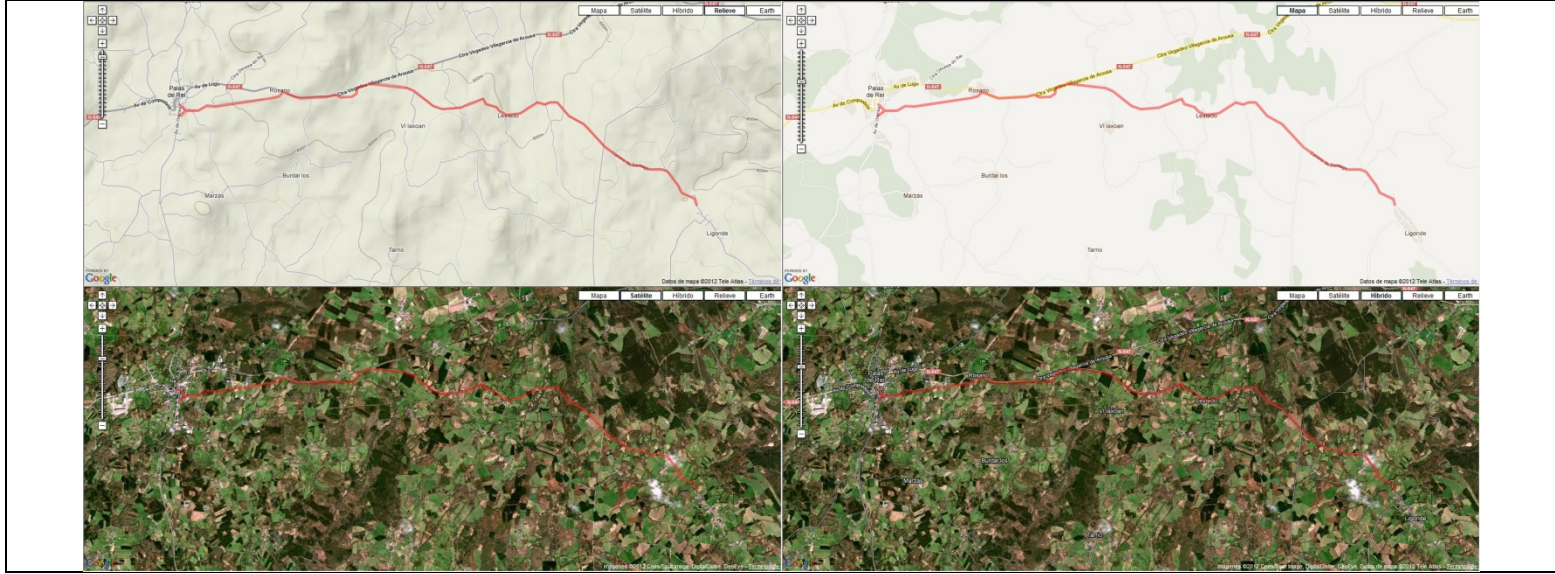
Horaris		Lloc	Quilometratges		Perfil
Hora	Temps		Parcials	Acumulat	
11:00	2,00'	Loio Portomarín	20,4	20,4	
11:20	20'		3,1	23,5	

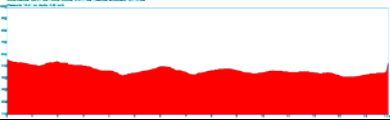


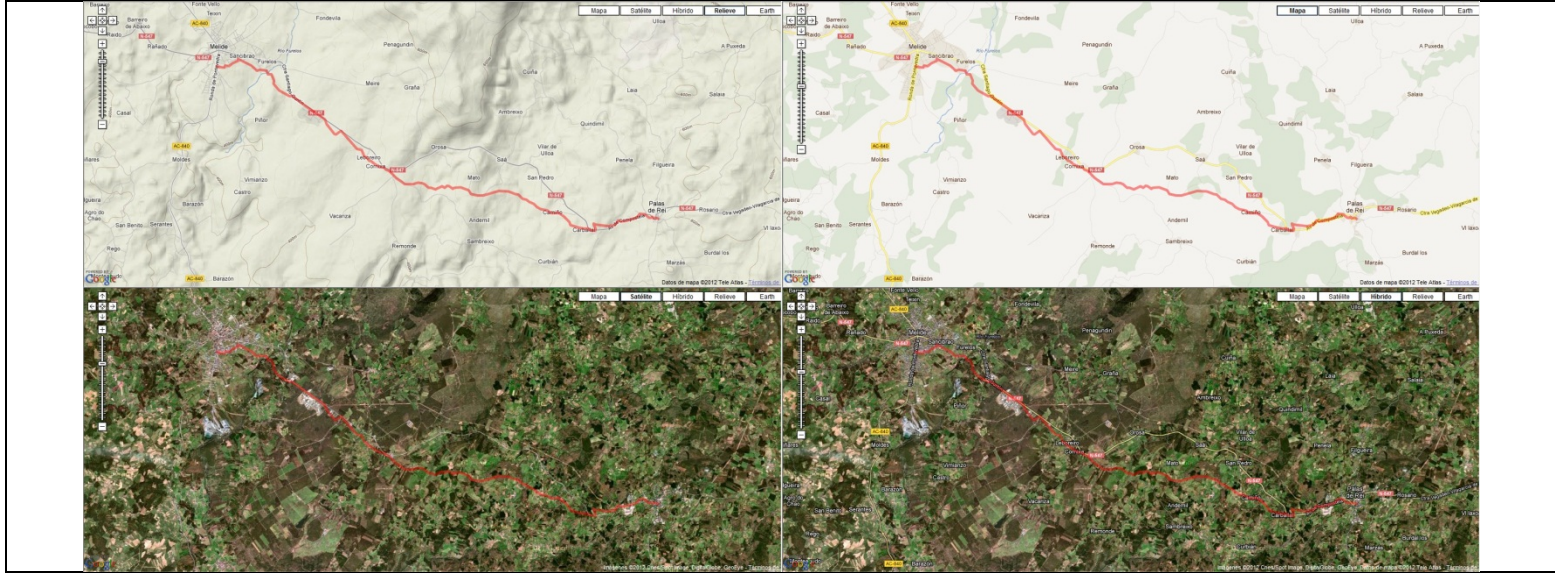
Horaris		Lloc	Quilometratges		Perfil
Hora	Temps		Parcials	Acumulat	
11:20	20'	Portomarín Ligonde	3,1	23,5	
12:55	1,35'		15,9	39,4	



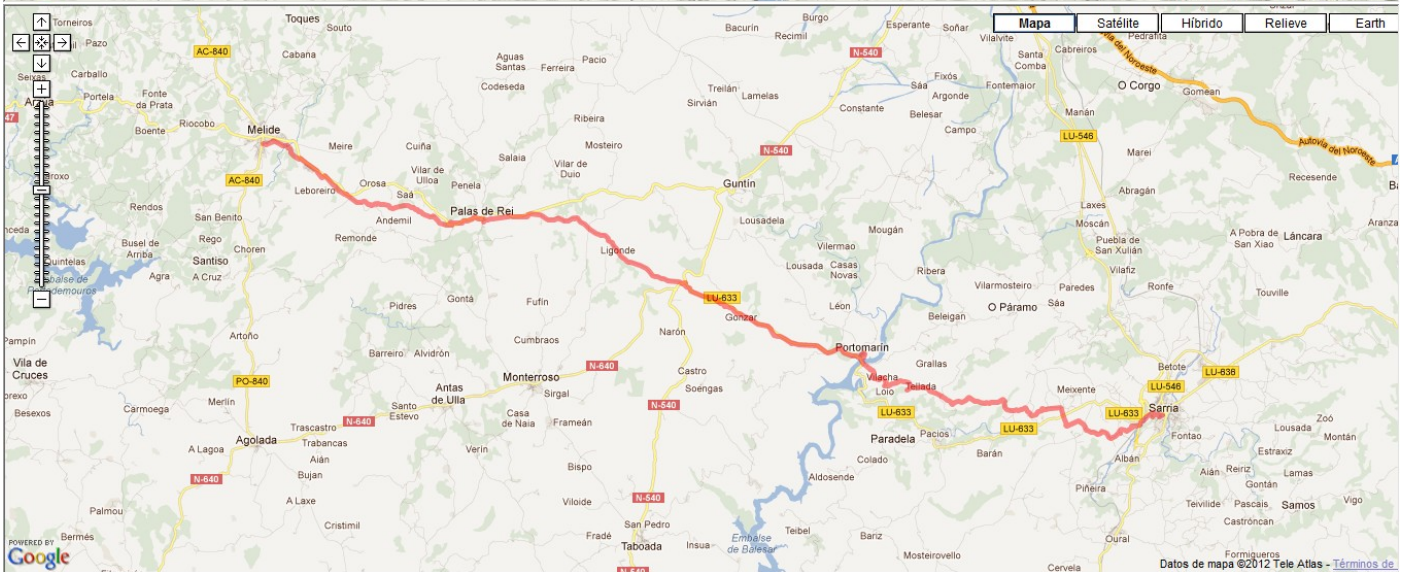
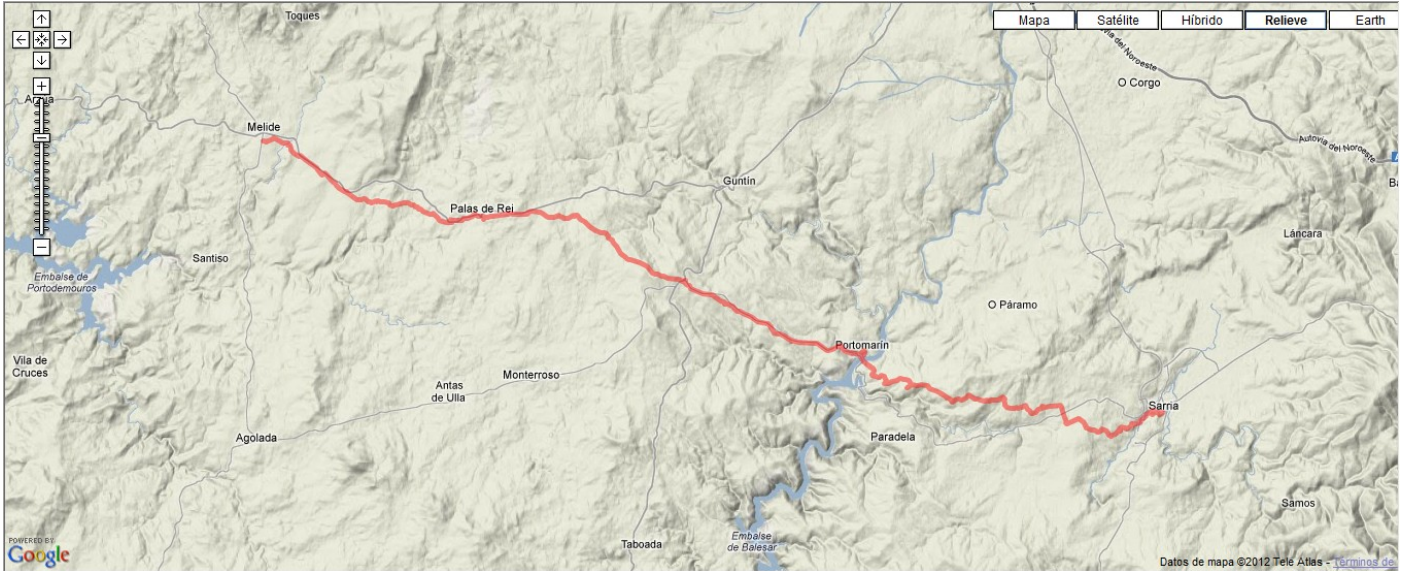
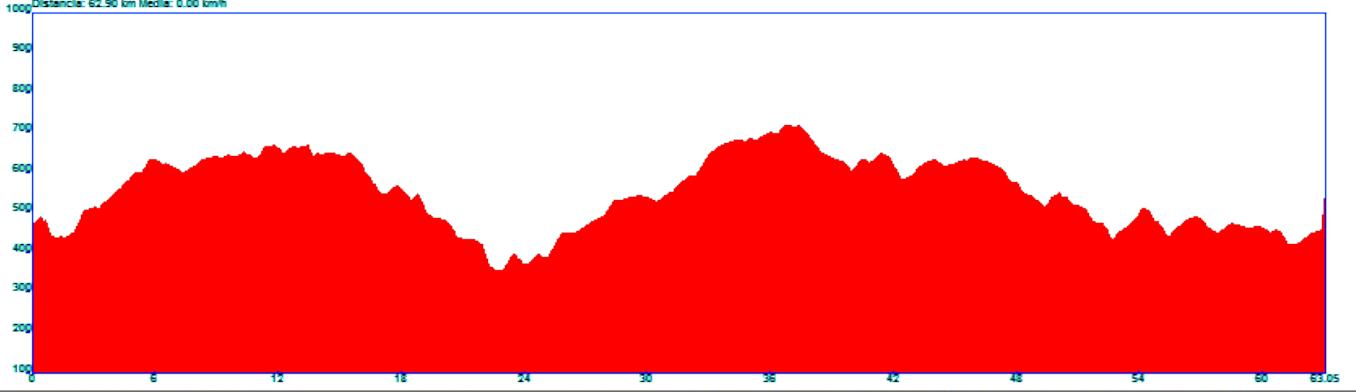
Horaris		Lloc	Quilometratges		Perfil
Hora	Temps		Parcials	Acumulat	
12:55	1,35'	Ligonde Palais de Rei	15,9	39,4	
13:45	50'		8,3	47,7	

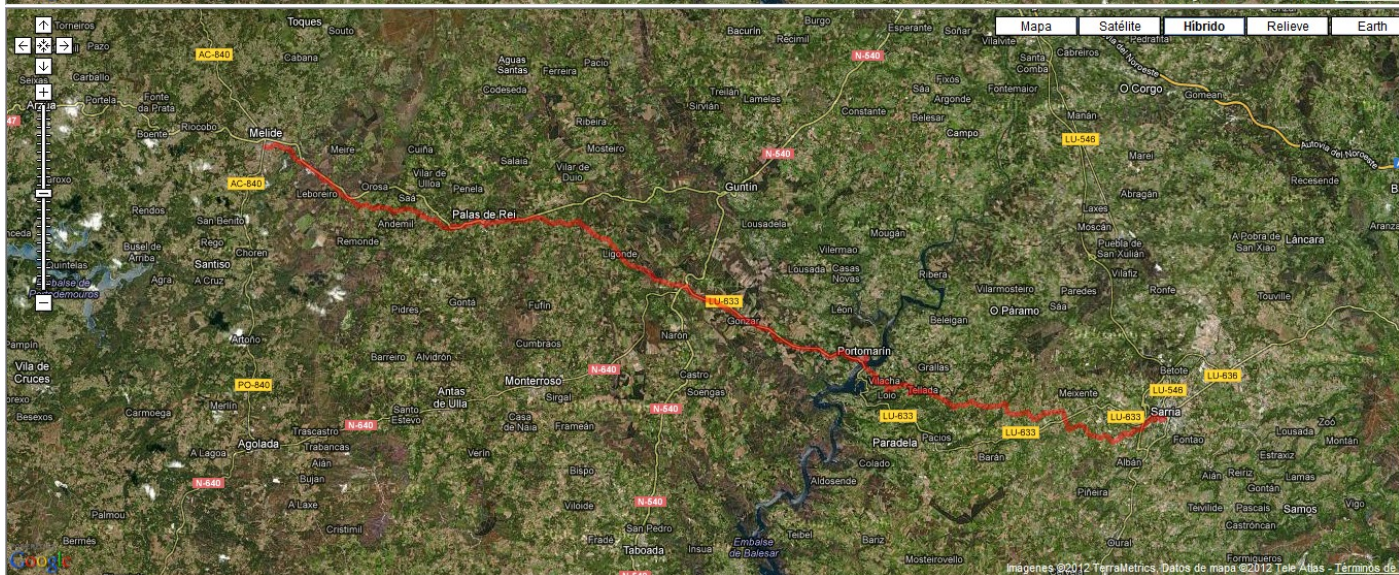


Horaris		Quilometratges		Perfil	
Hora	Temps	Lloc	Parcials		Acumulat
13:45	50'	Palais de Rei Melide	8,3	47,7	
15:15	1,30'		14,9	62,6	



Altura máxima: 718.24 mts - Altura mínima: 355.83 mts - Desnivel acumulado: 1215.11 mts
Distancia: 62.90 km Media: 0.00 km/h





12-01 Sarria-Loio.KML



12-02 Loio-Portomarín.KML



12-03 Portomarín-Ligone.KML



12-04 Ligonde-Palais de Rei.KML



12-05 Palais de Rei-Melide.KML



12 Sarria-Melide.KML