
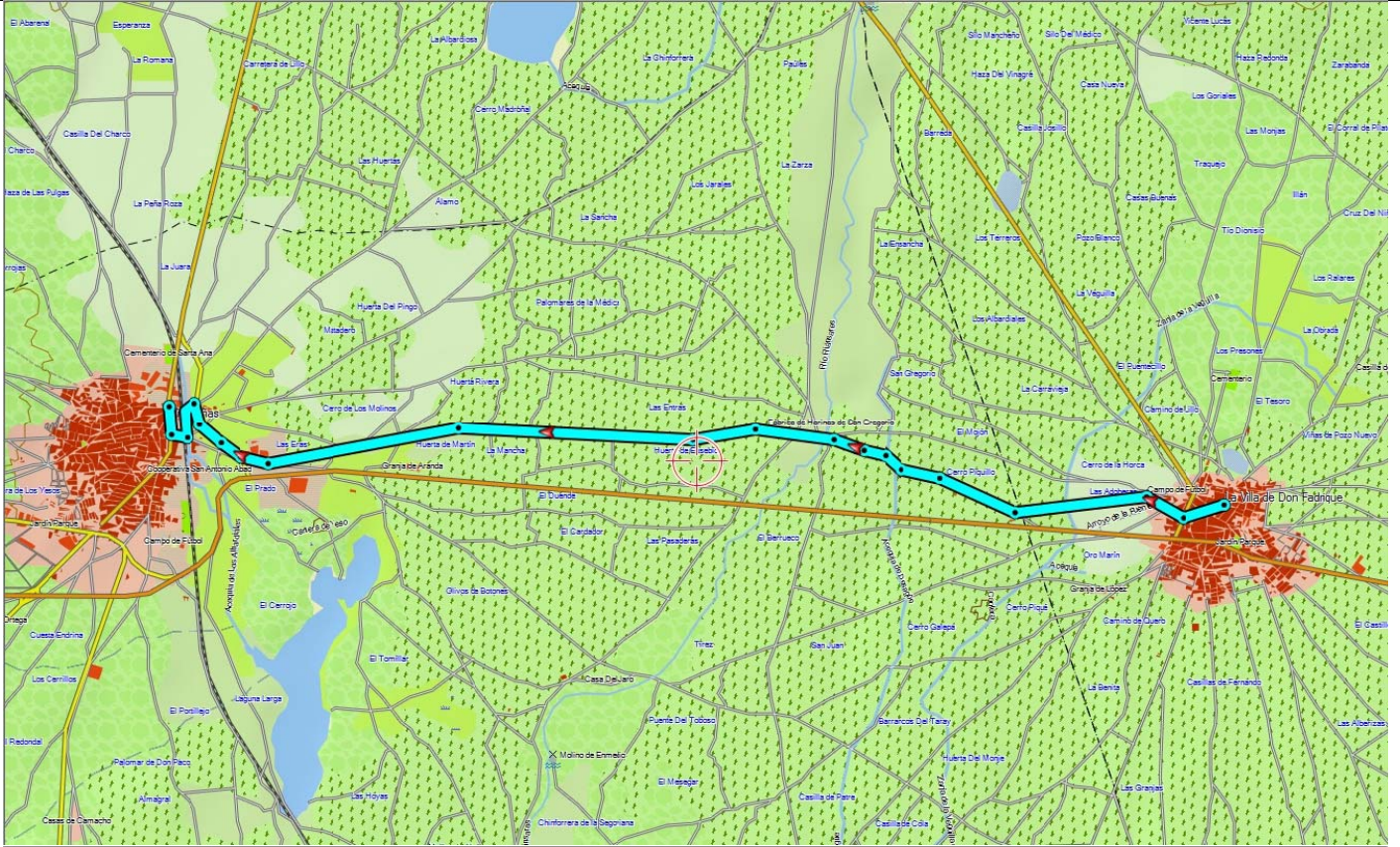
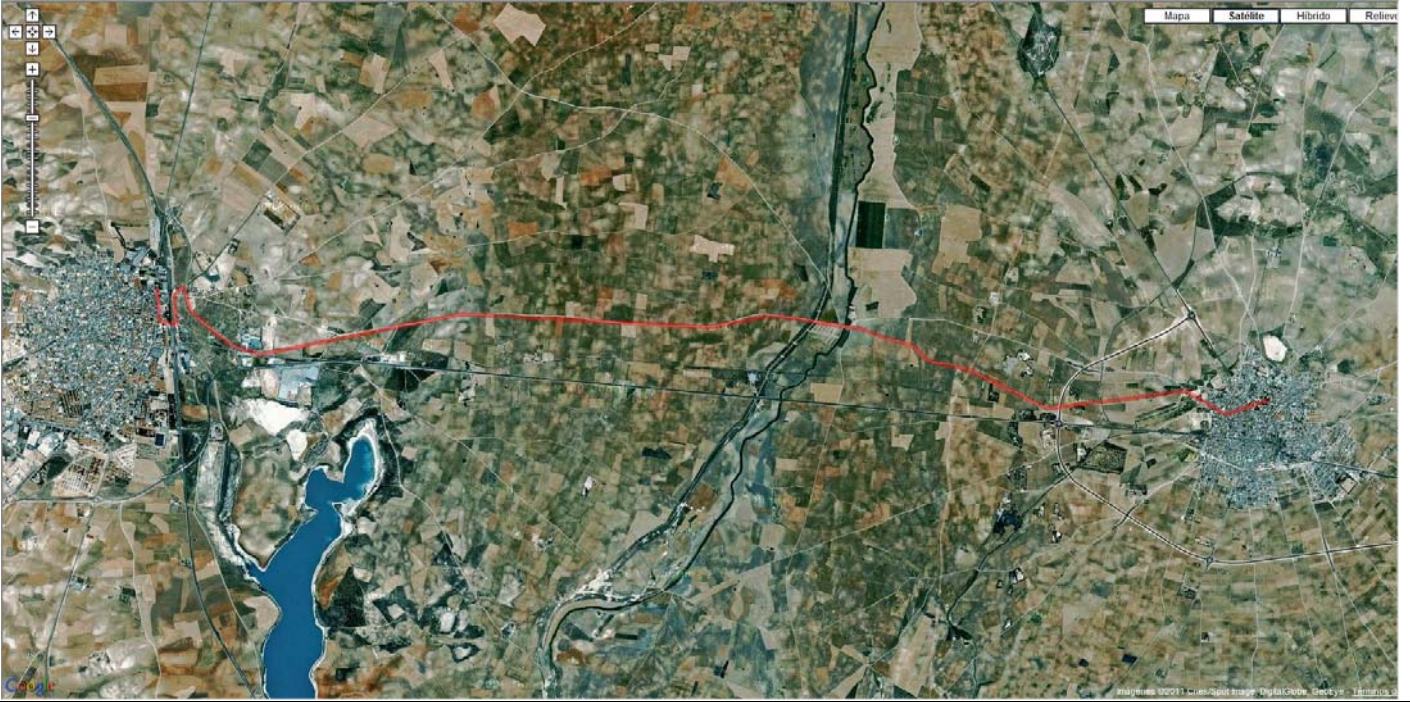
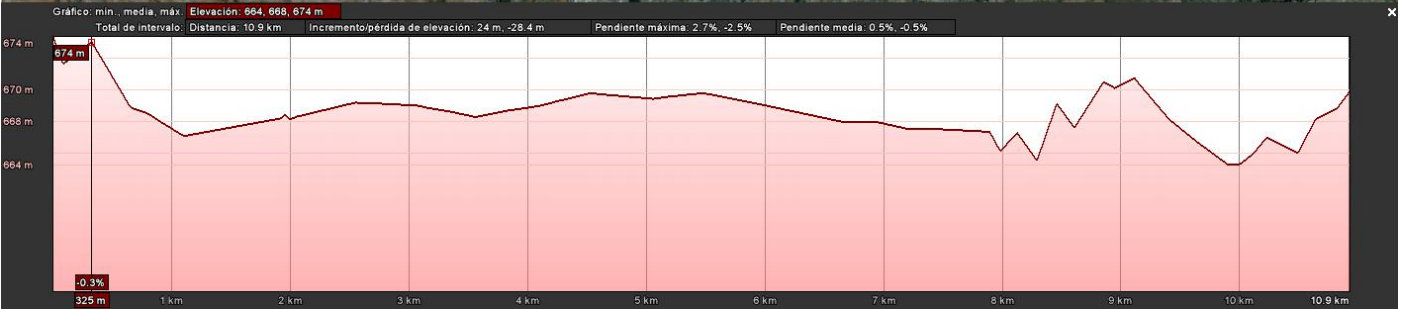
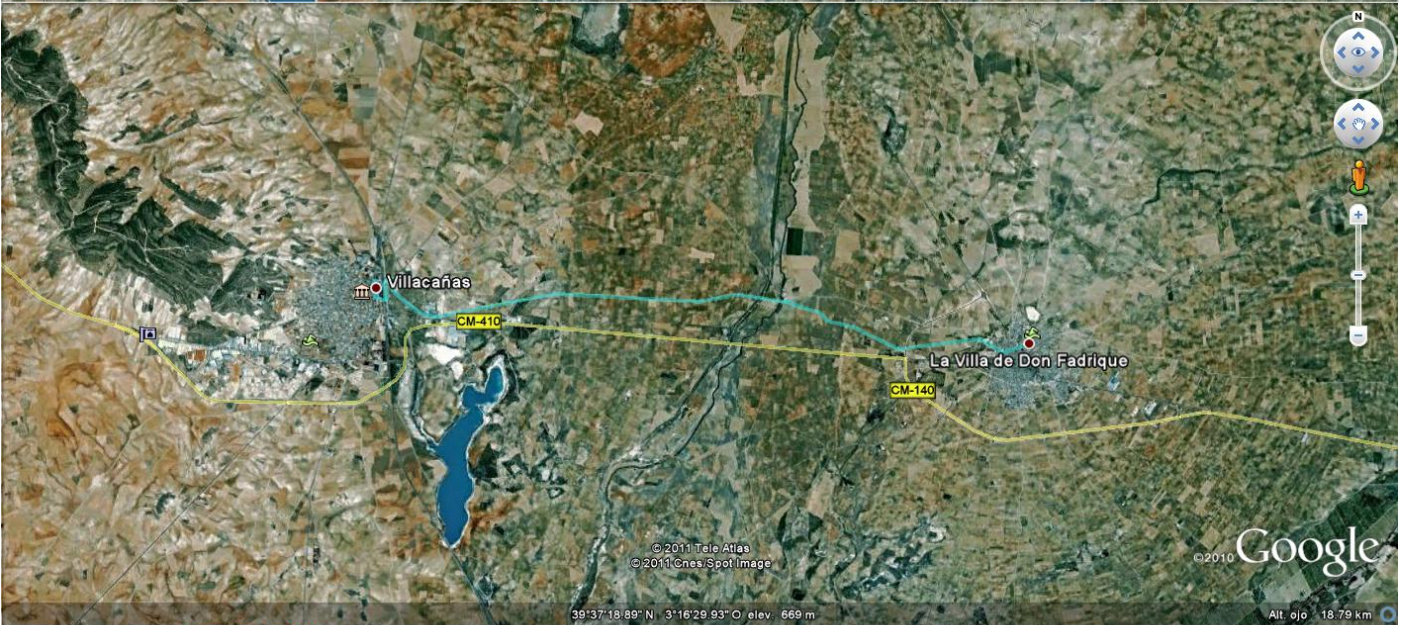
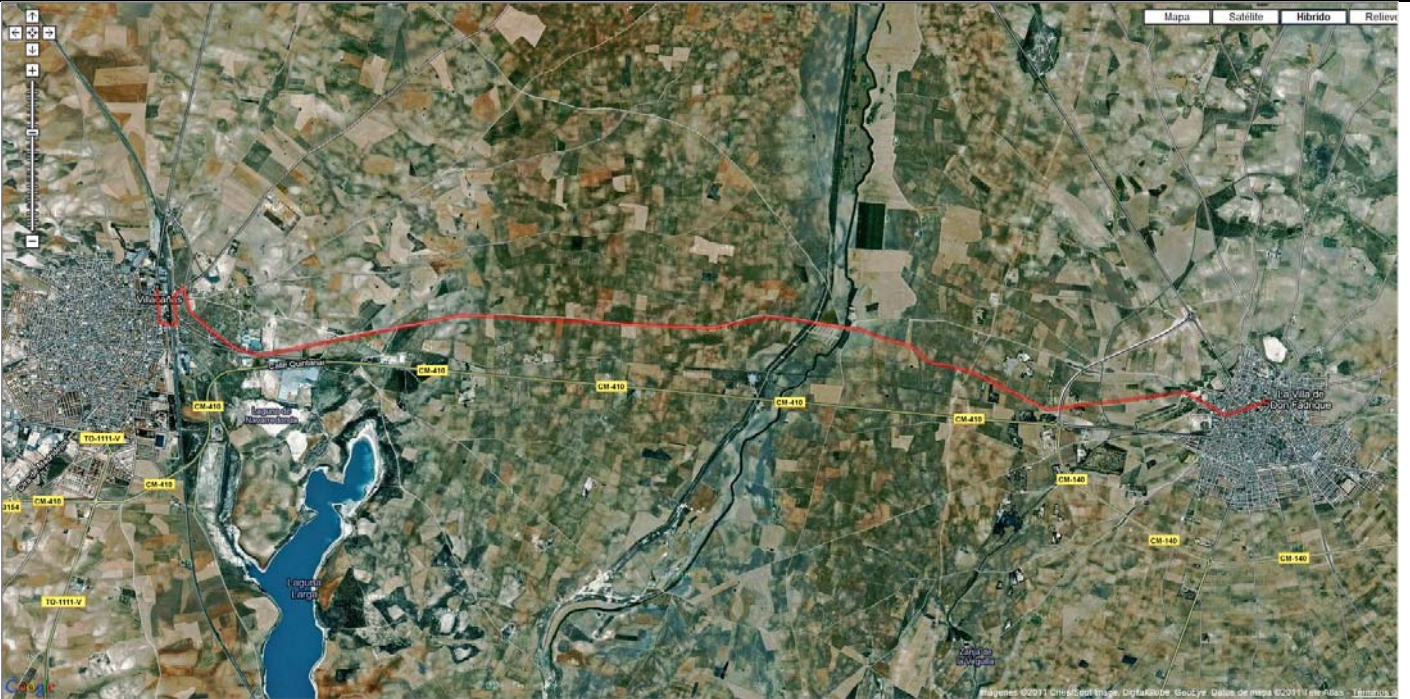


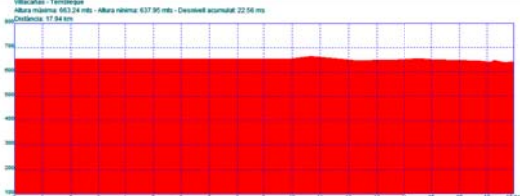
Etapa: De La Villa de Don Fadrique a Toledo

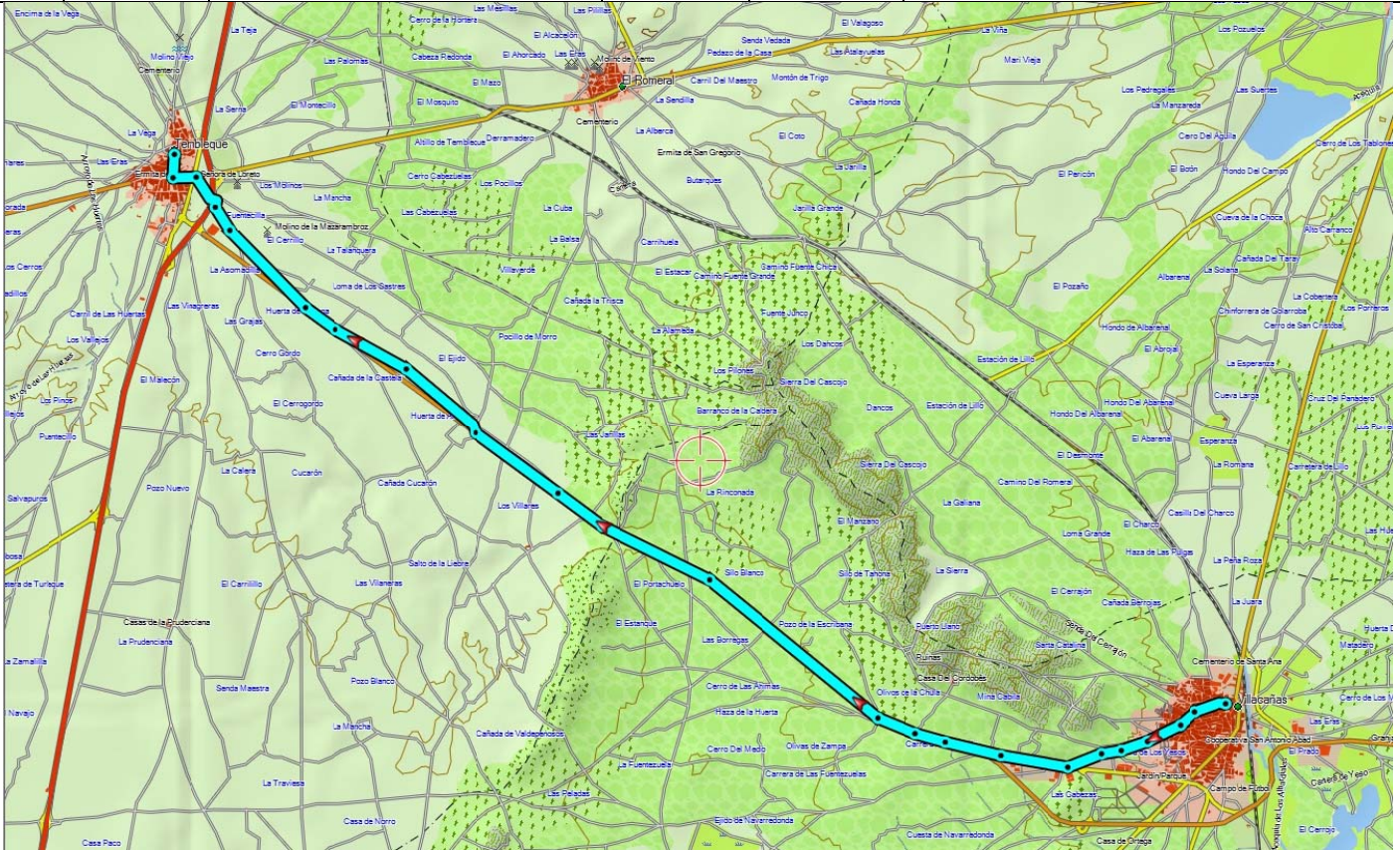
Horaris		Lloc	Quilometratges		Perfil
Hora	Temps		Parcials	Acumulat	
9:00	0	La villa de Don Fadrique Villacañas	0	0	
9:44	44'		10,9	10,9	

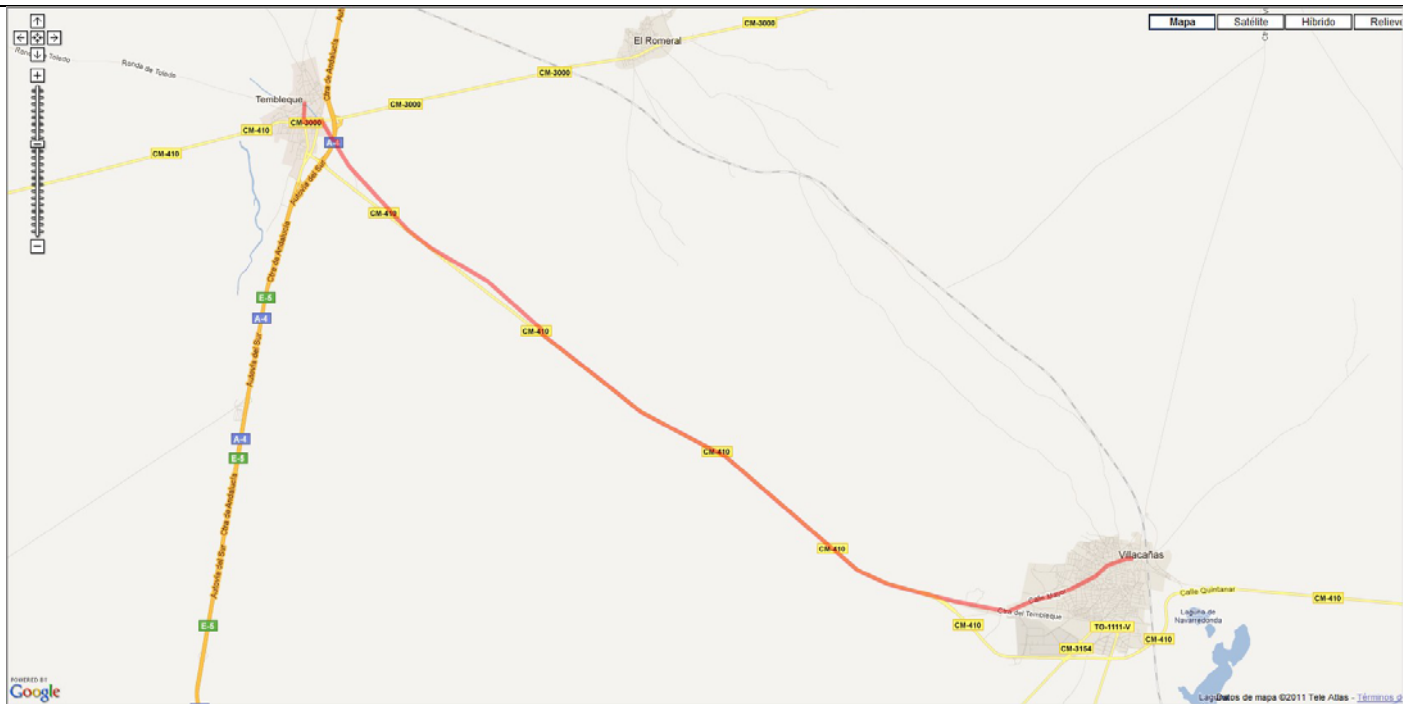


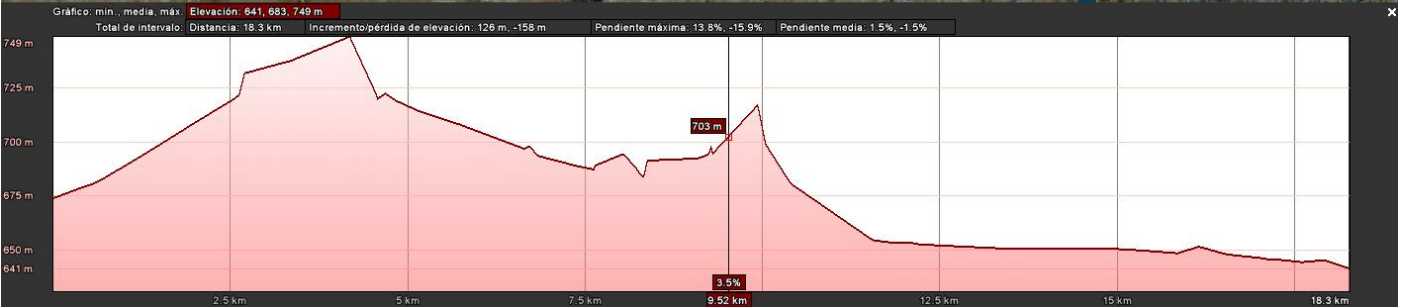
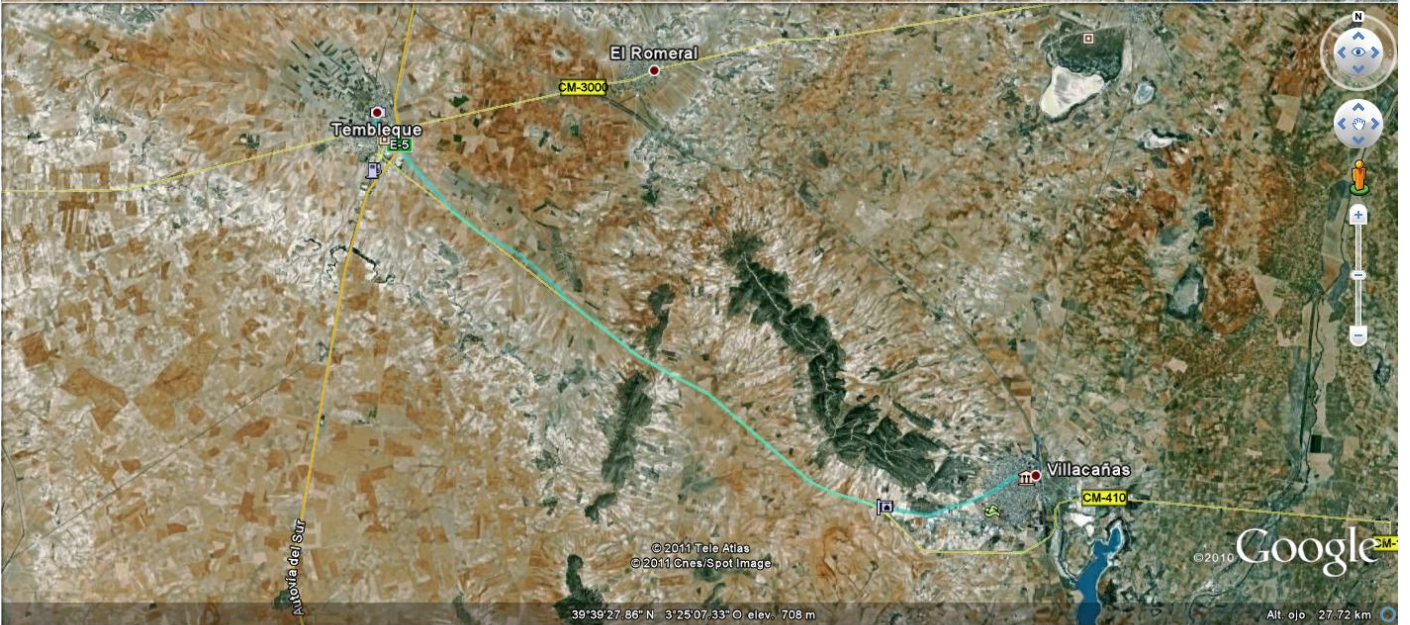


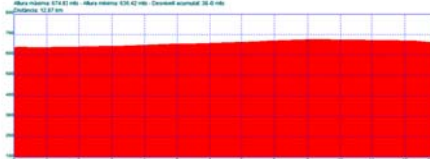


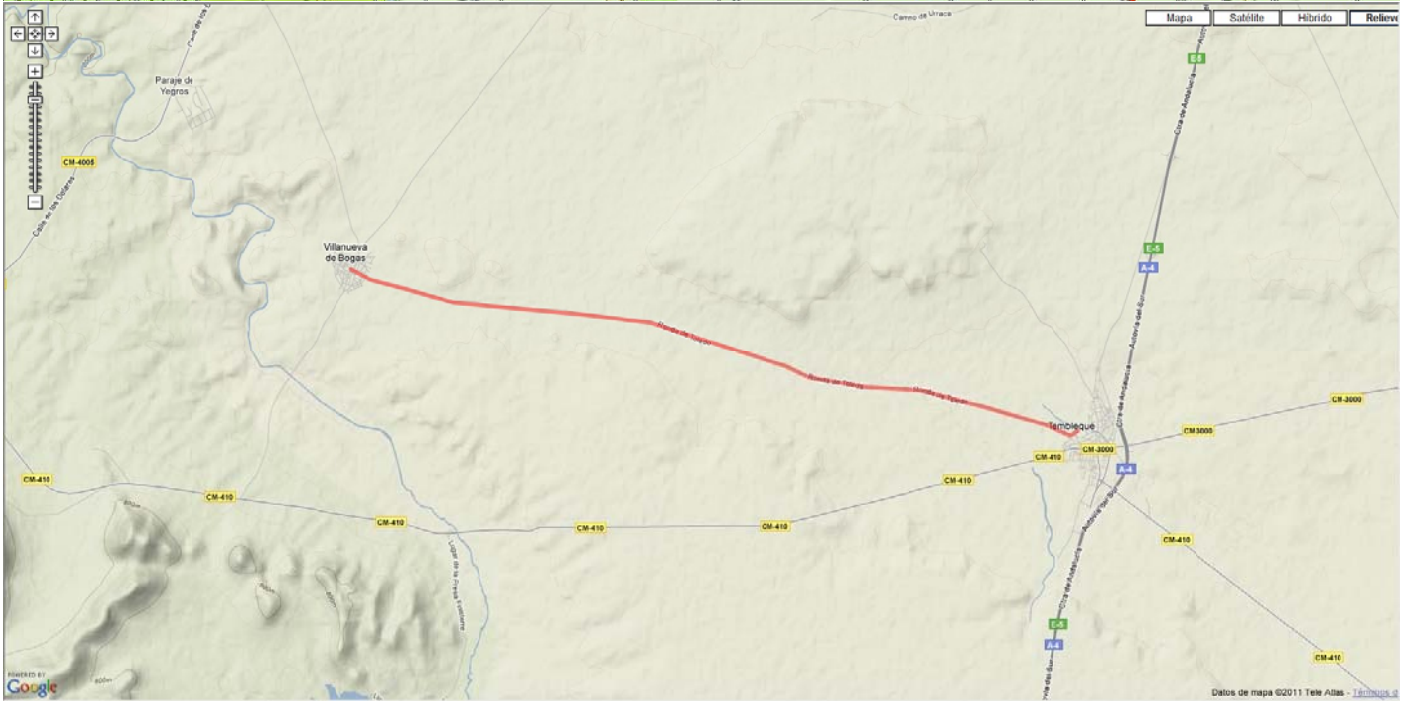
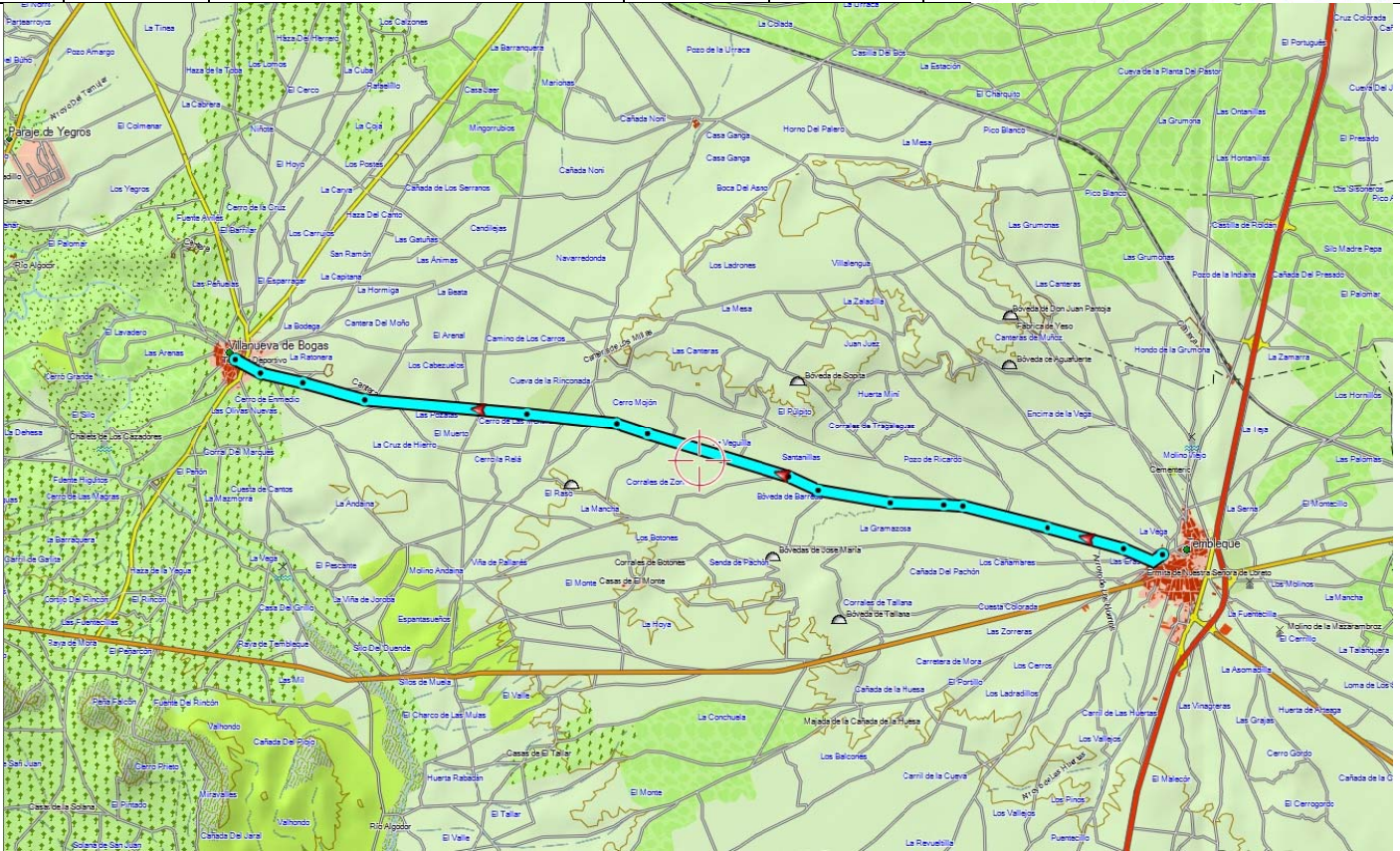
Horaris		Lloc	Quilometratges		Perfil
Hora	Temps		Parcials	Acumulat	
9:44	44'	Villacañas Tembleque	10,9	10,9	
10:57	1:13'		18,3	29,2	

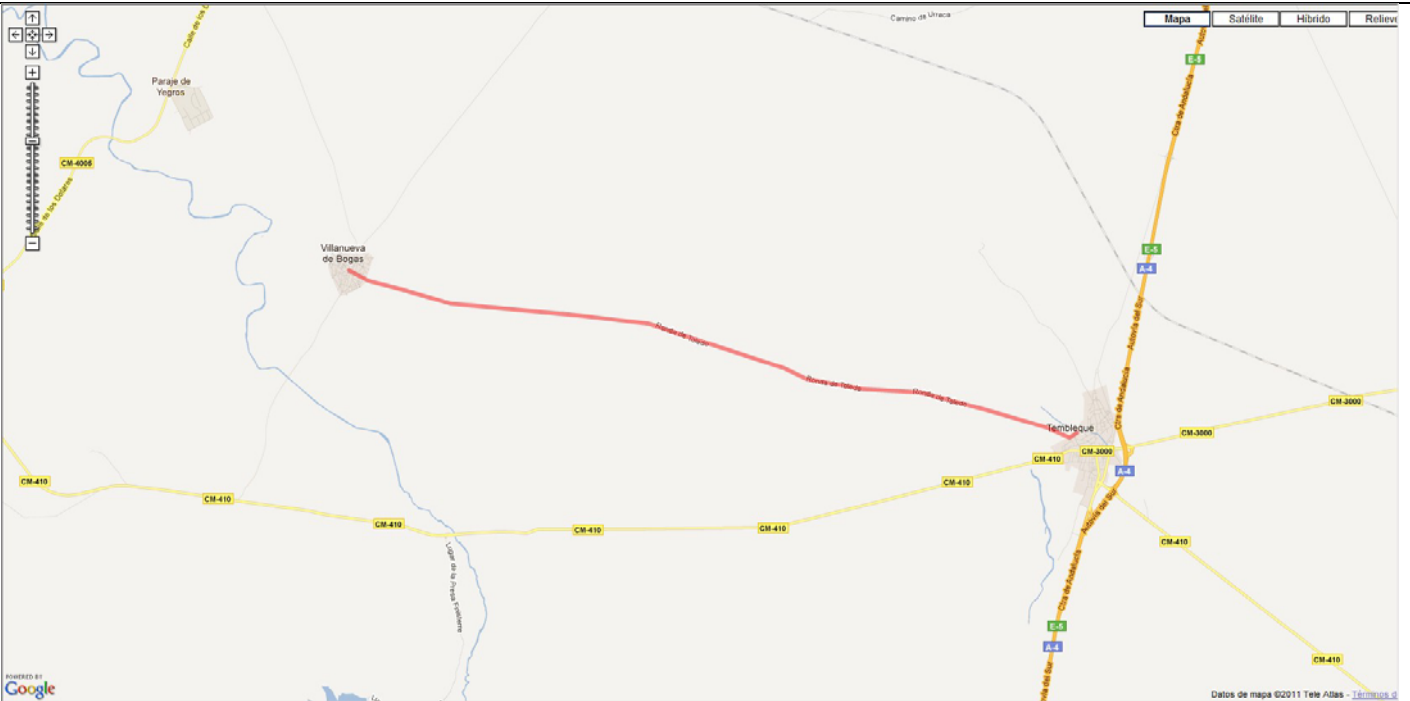






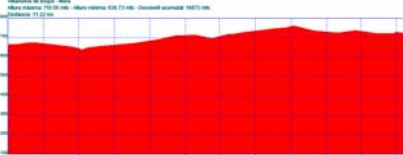
Horaris		Lloc	Quilometratges		Perfil
Hora	Temps		Parcials	Acumulat	
10:57	1:13'	Tembleque Villanueva de Bogas	18,3	29,2	
11:50	53'		13,3	42,5	

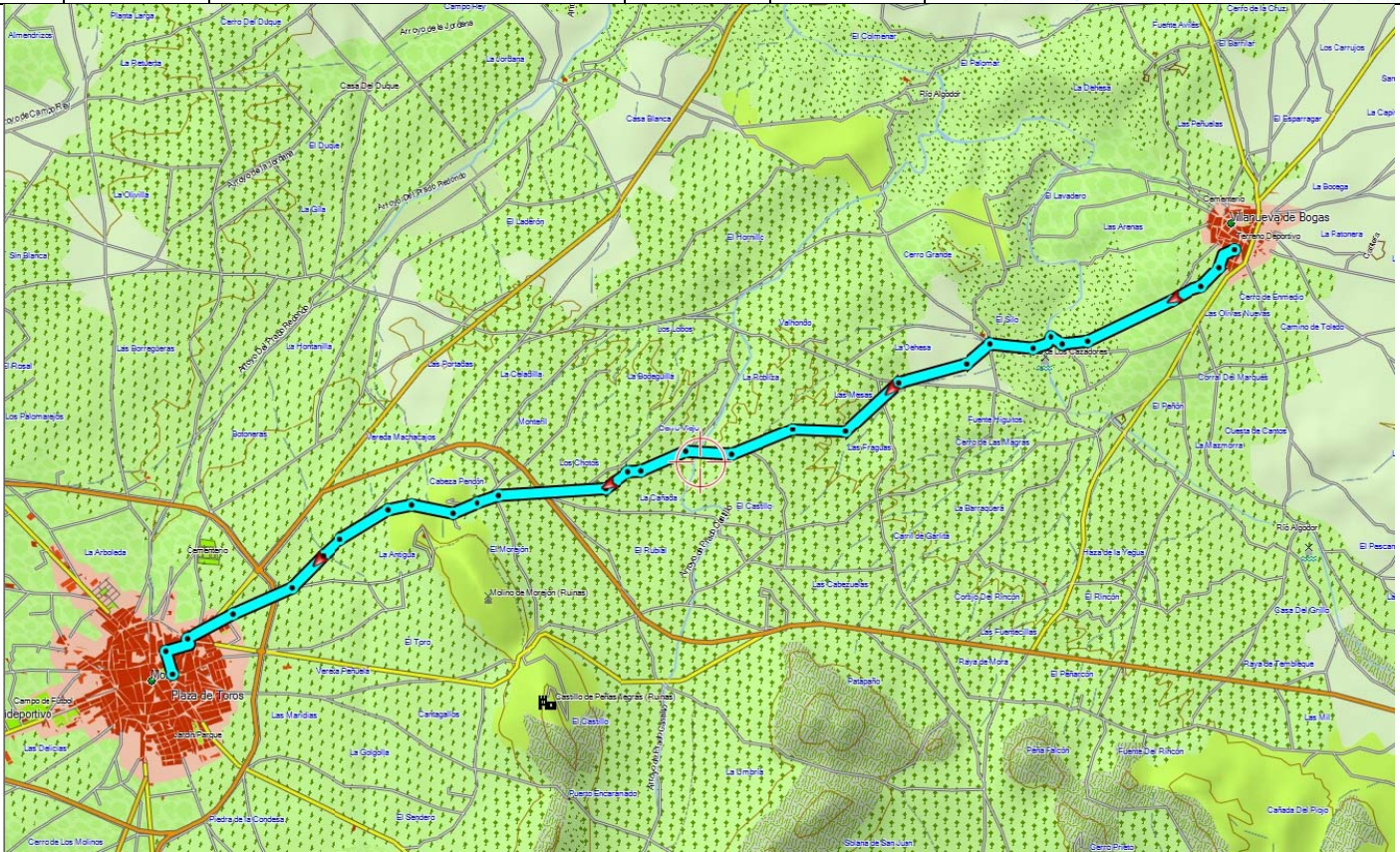




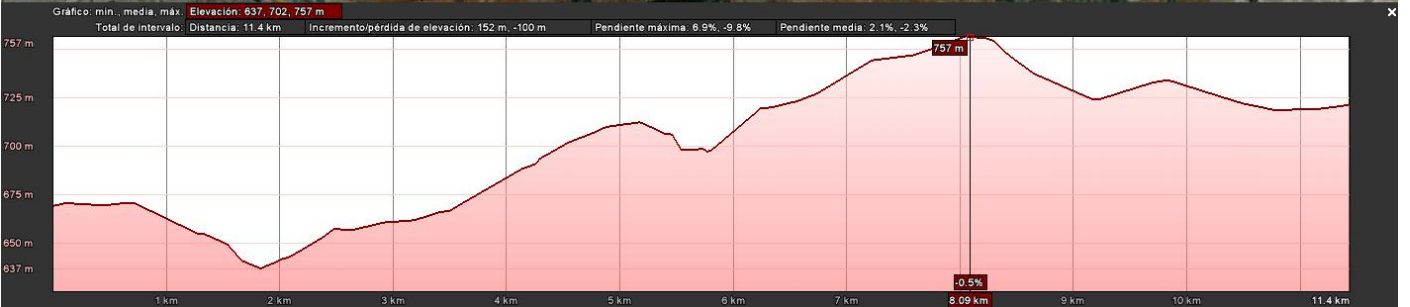
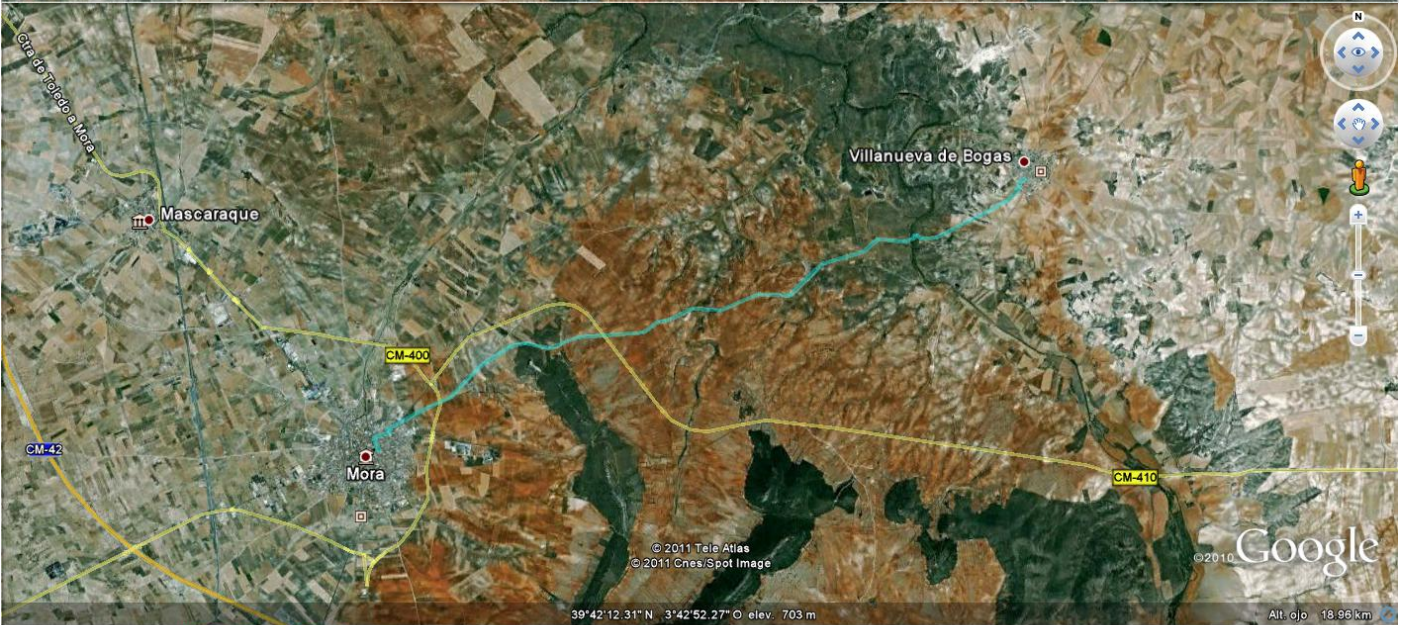


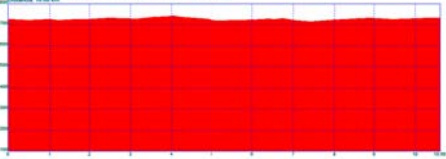


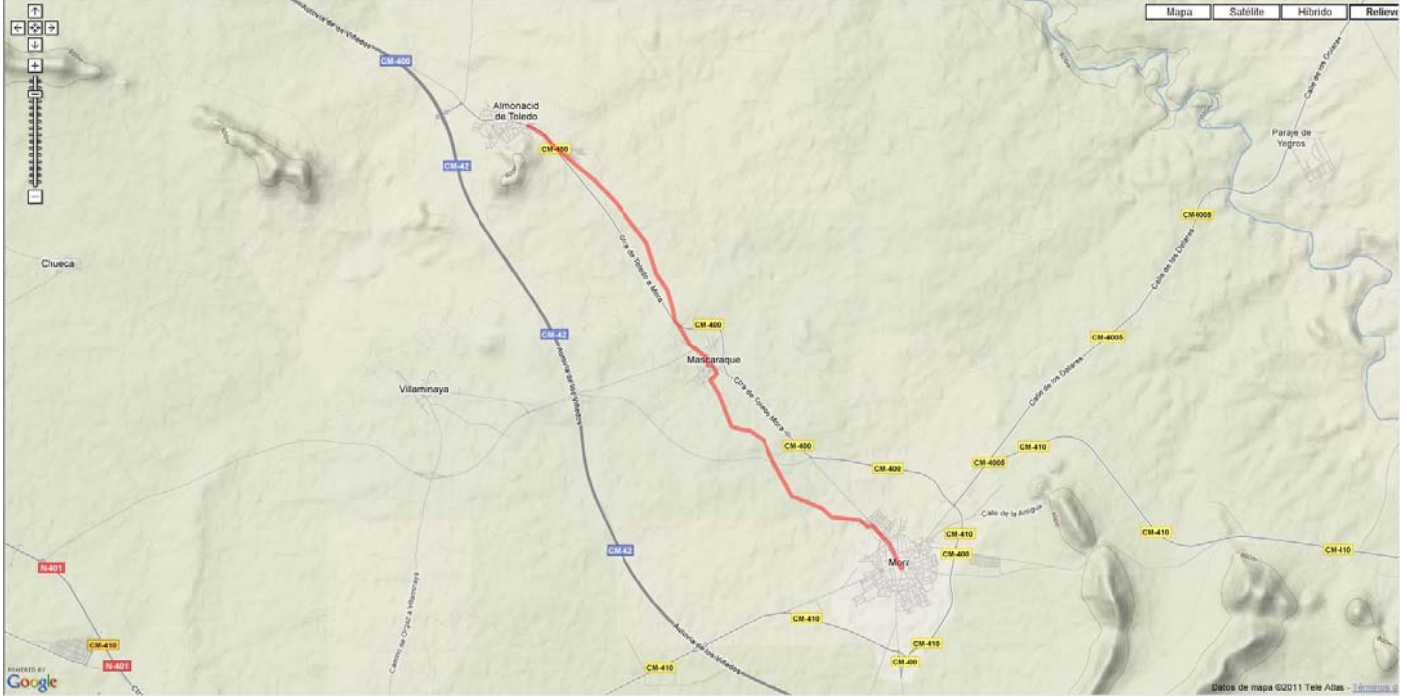
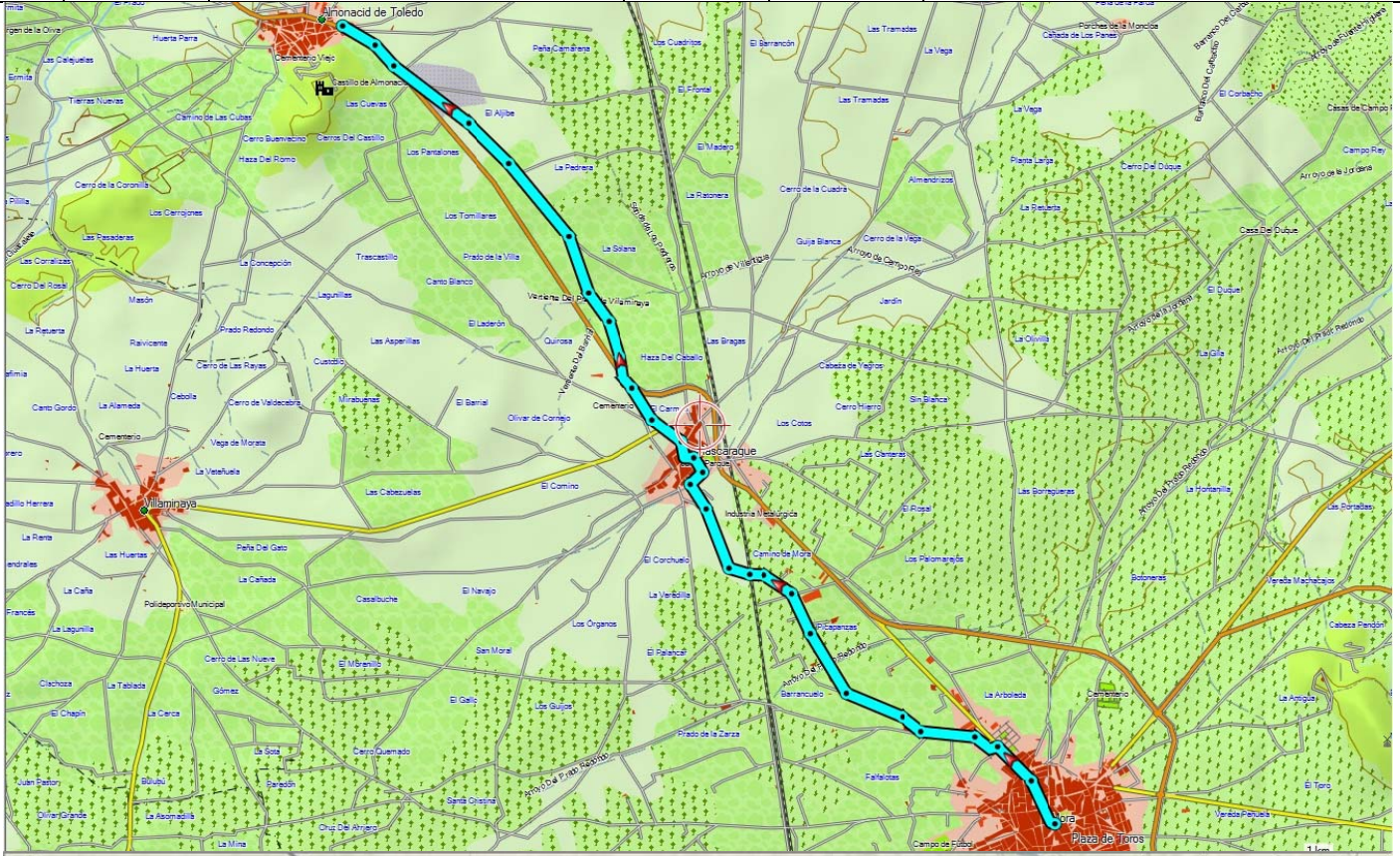
Horaris		Lloc	Quilometratges		Perfil
Hora	Temps		Parcials	Acumulat	
11:50	53'	Villanueva de Bogas Mora	13,3	42,5	
12:36	46'		11,4	53,9	

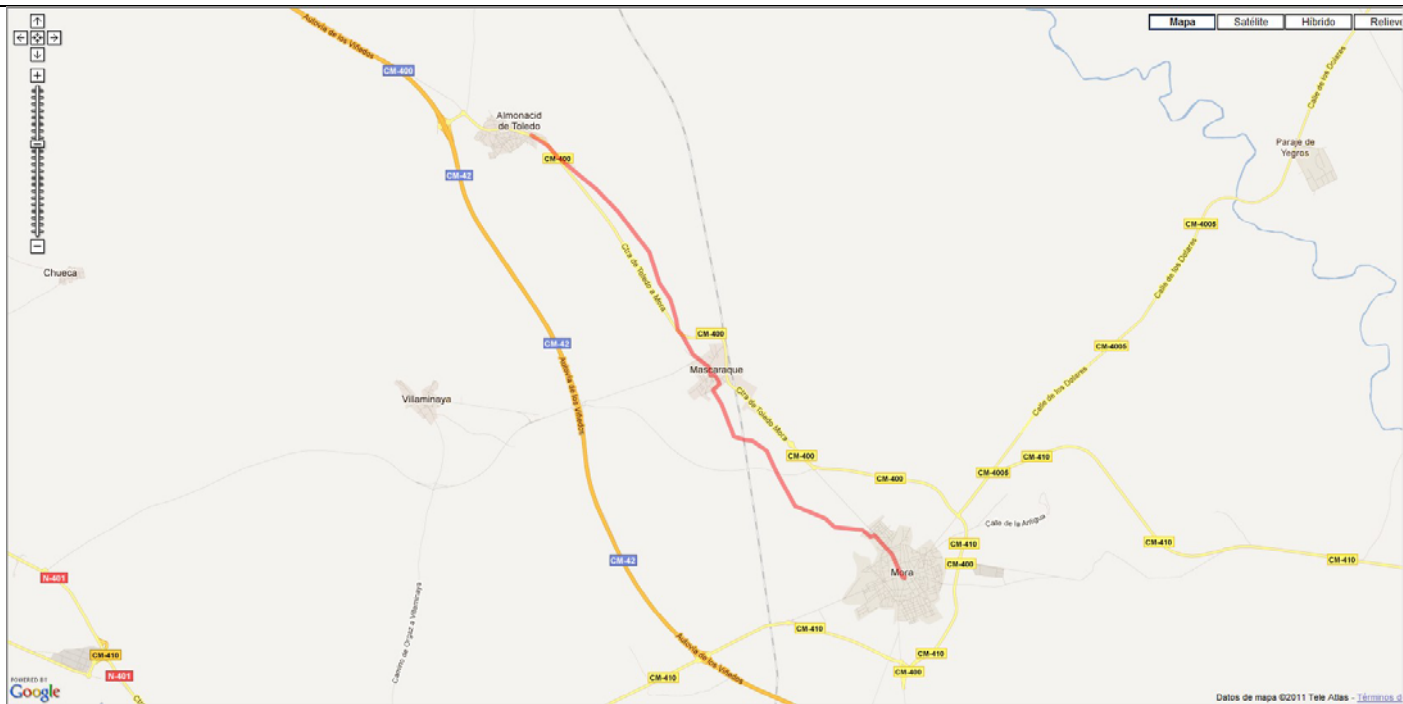




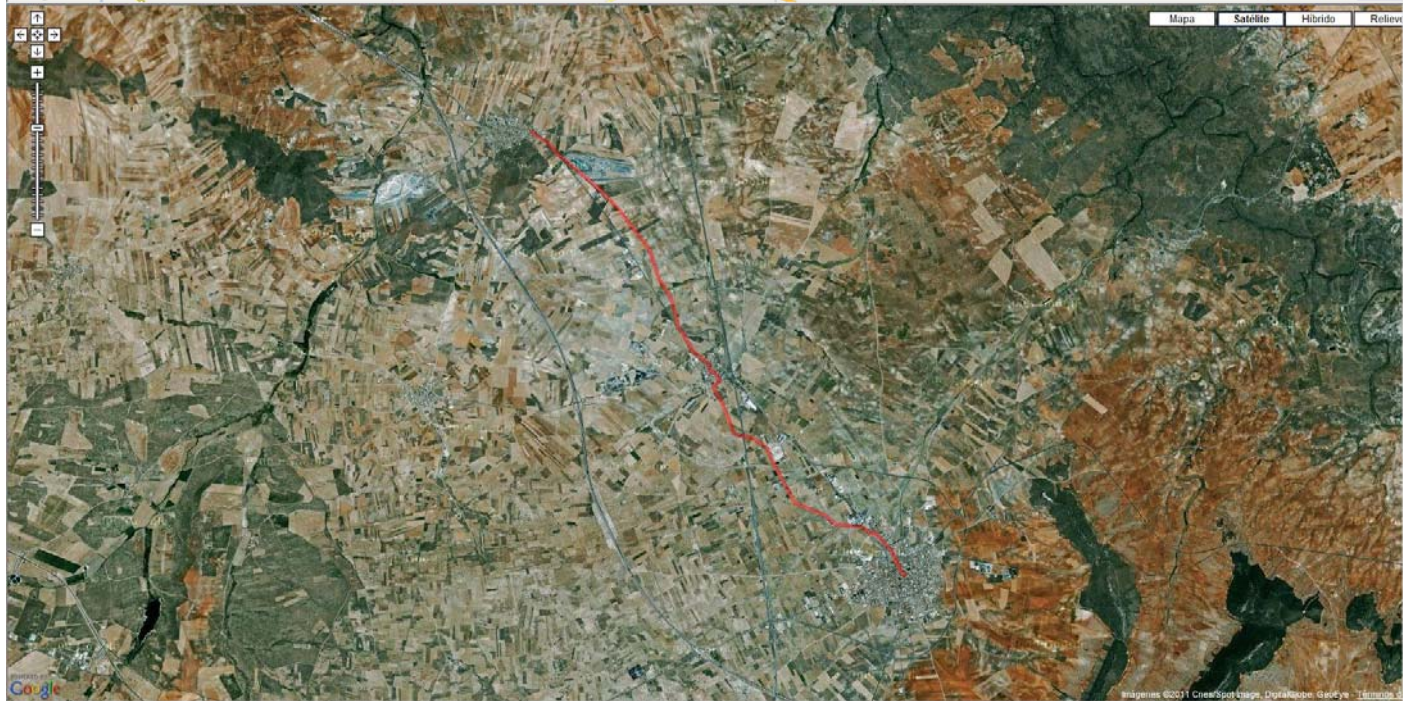


Horaris		Quilometratges			Perfil
Hora	Temps	Lloc	Parcials	Acumulat	
12:36	46'	Mora	11,4	53,9	
13:20	44'	Almonacid de Toledo	11,0	64,9	



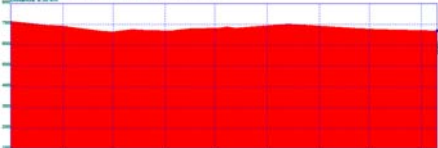


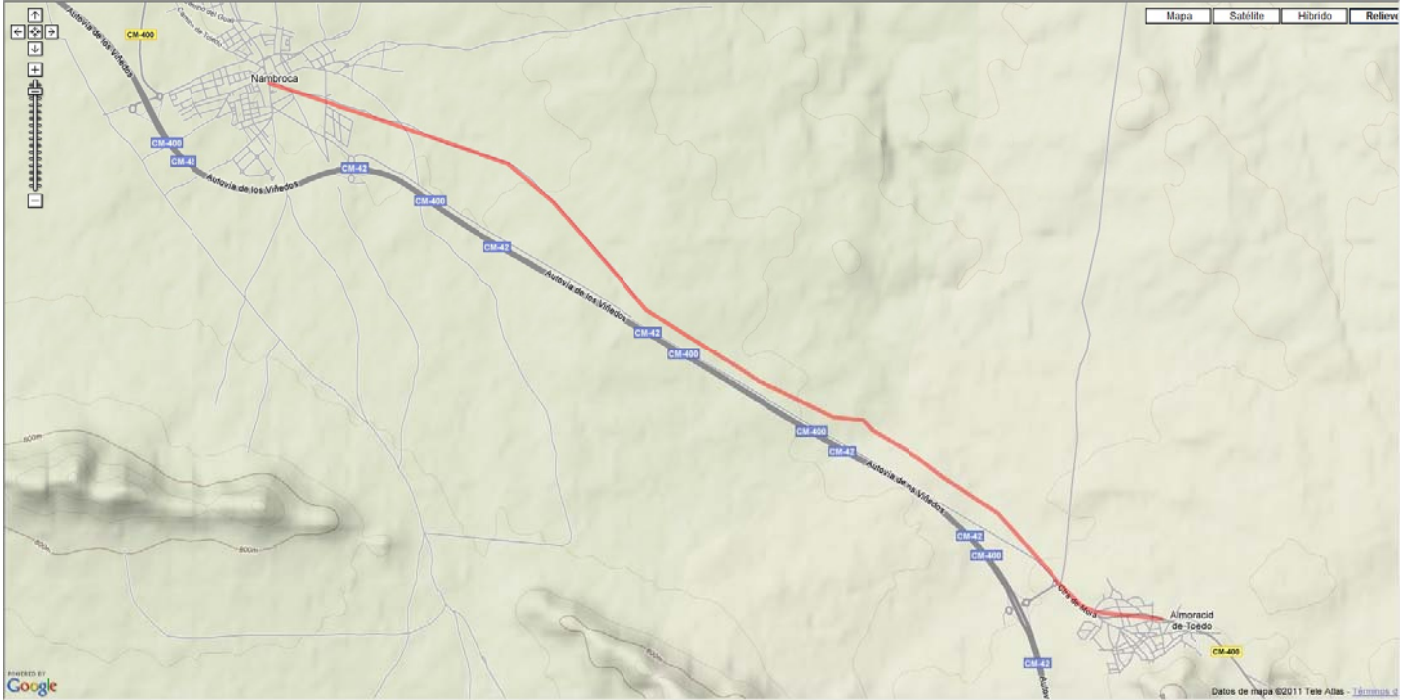
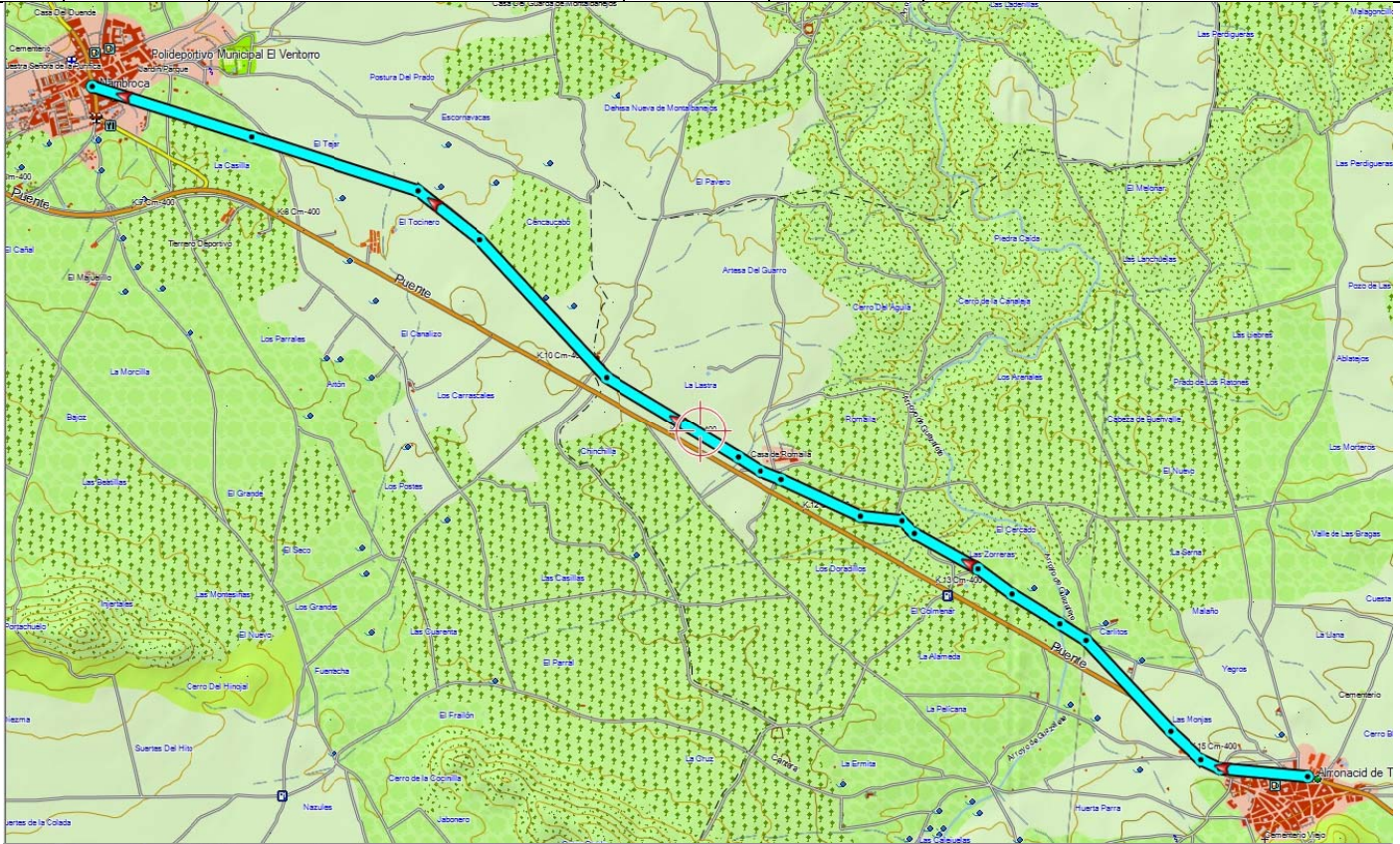
Datos de mapa ©2011 Tele Atlas - [Terms of Use](#)



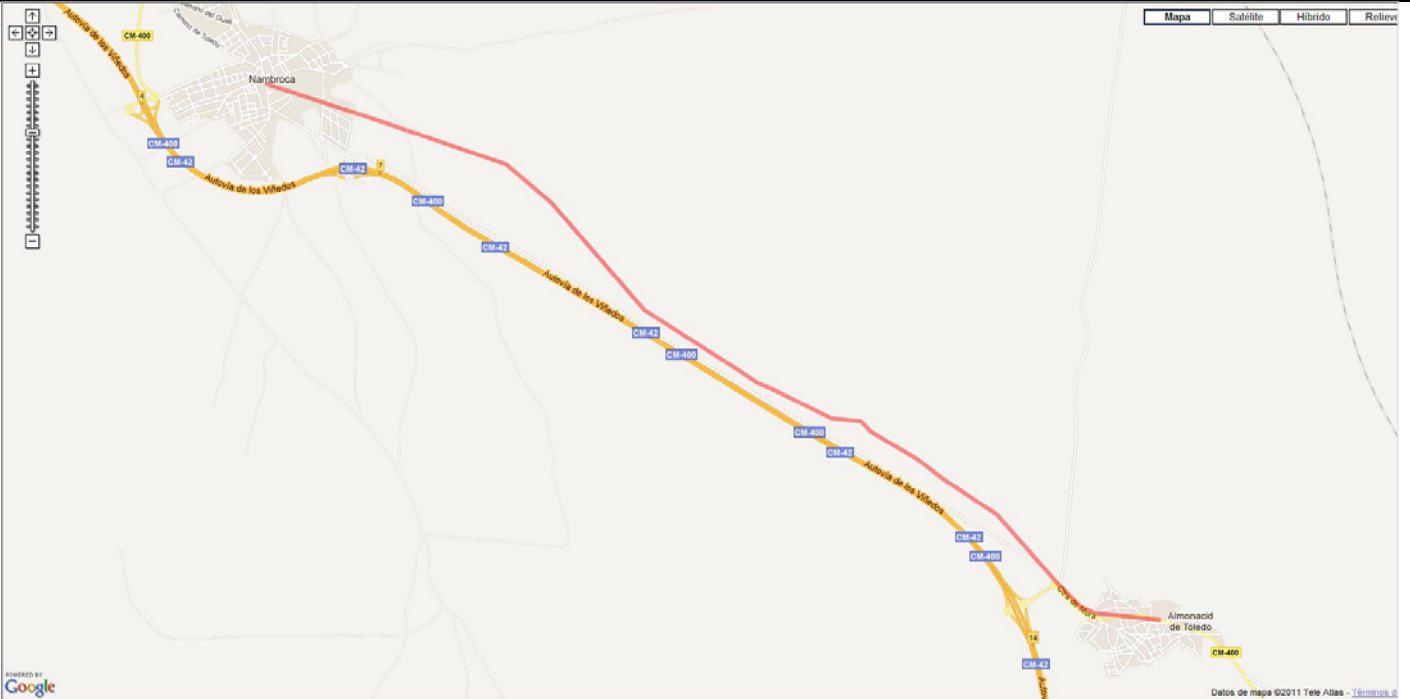
Imágenes ©2011 Cnes/Spot Image, DigitalGlobe, GeoEye, Earthstar, etc.

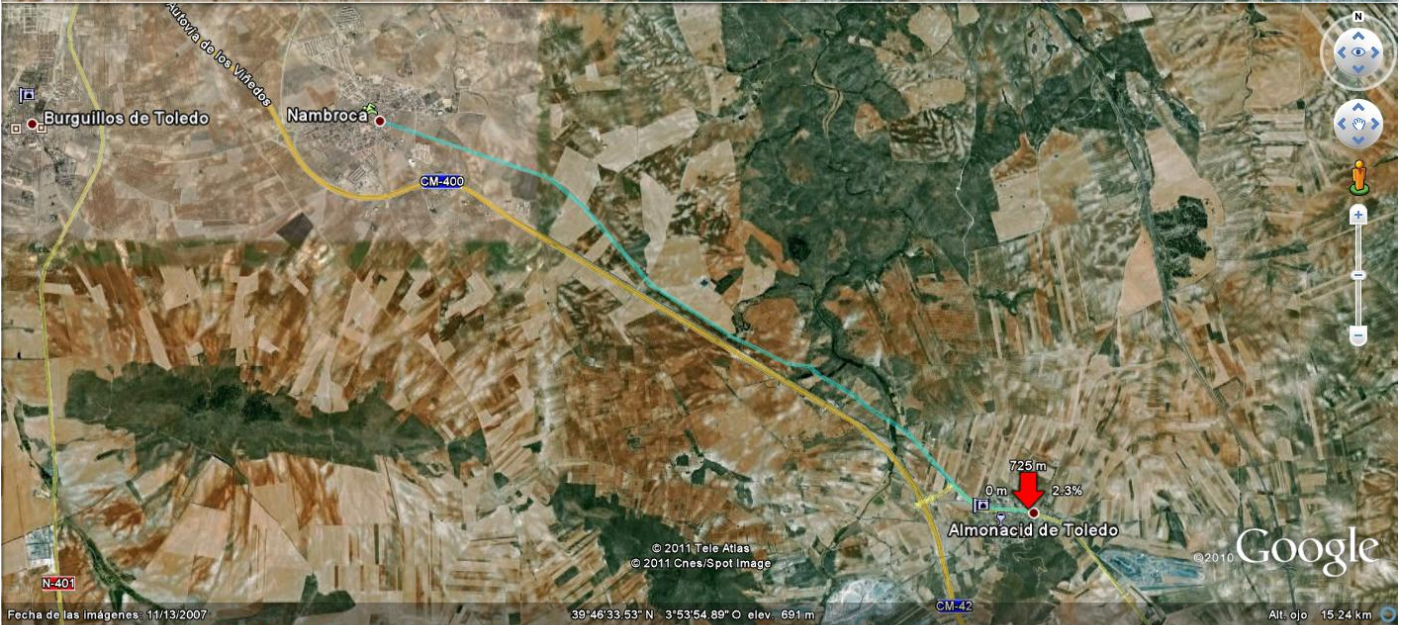
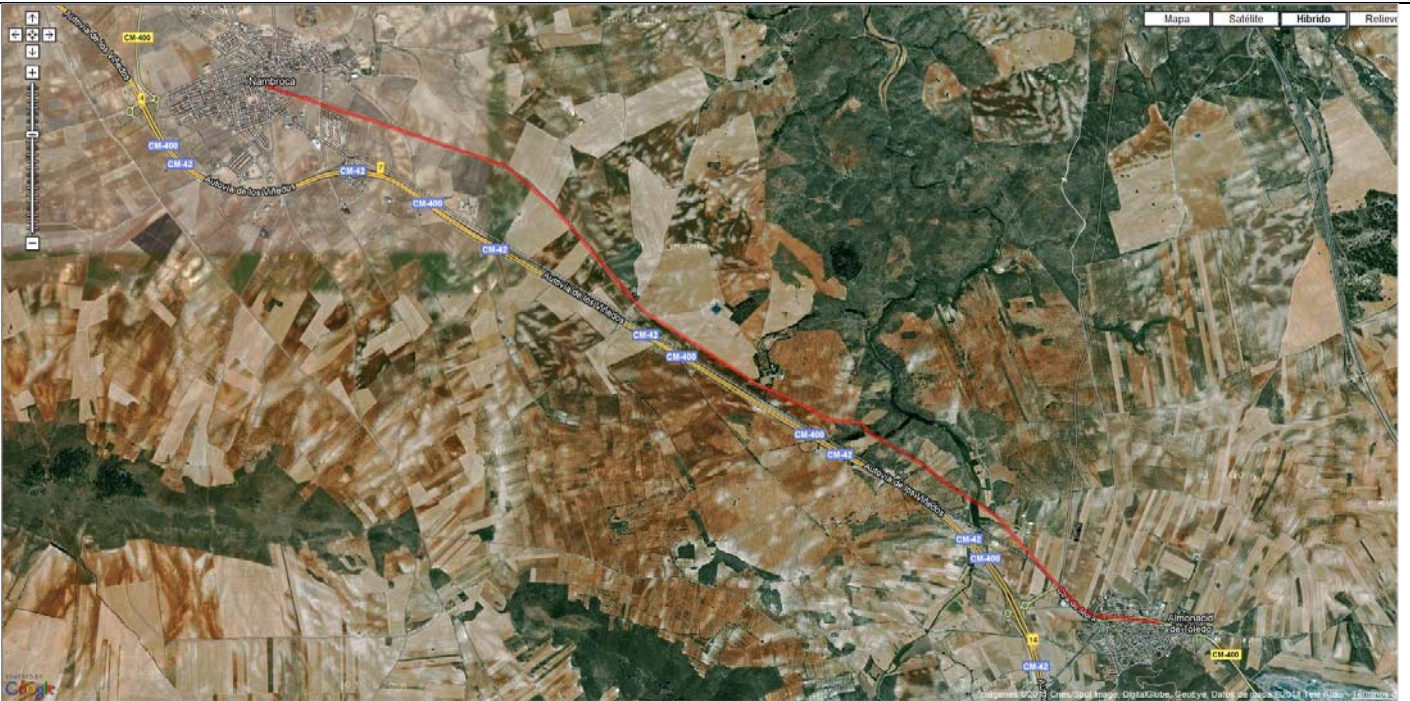


Horaris		Lloc	Quilometratges		Perfil
Hora	Temps		Parcials	Acumulat	
13:20	44'	Almonacid de Toledo Nambroca	11,0	64,9	
13:58	38'		9,4	74,3	



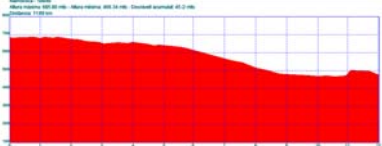


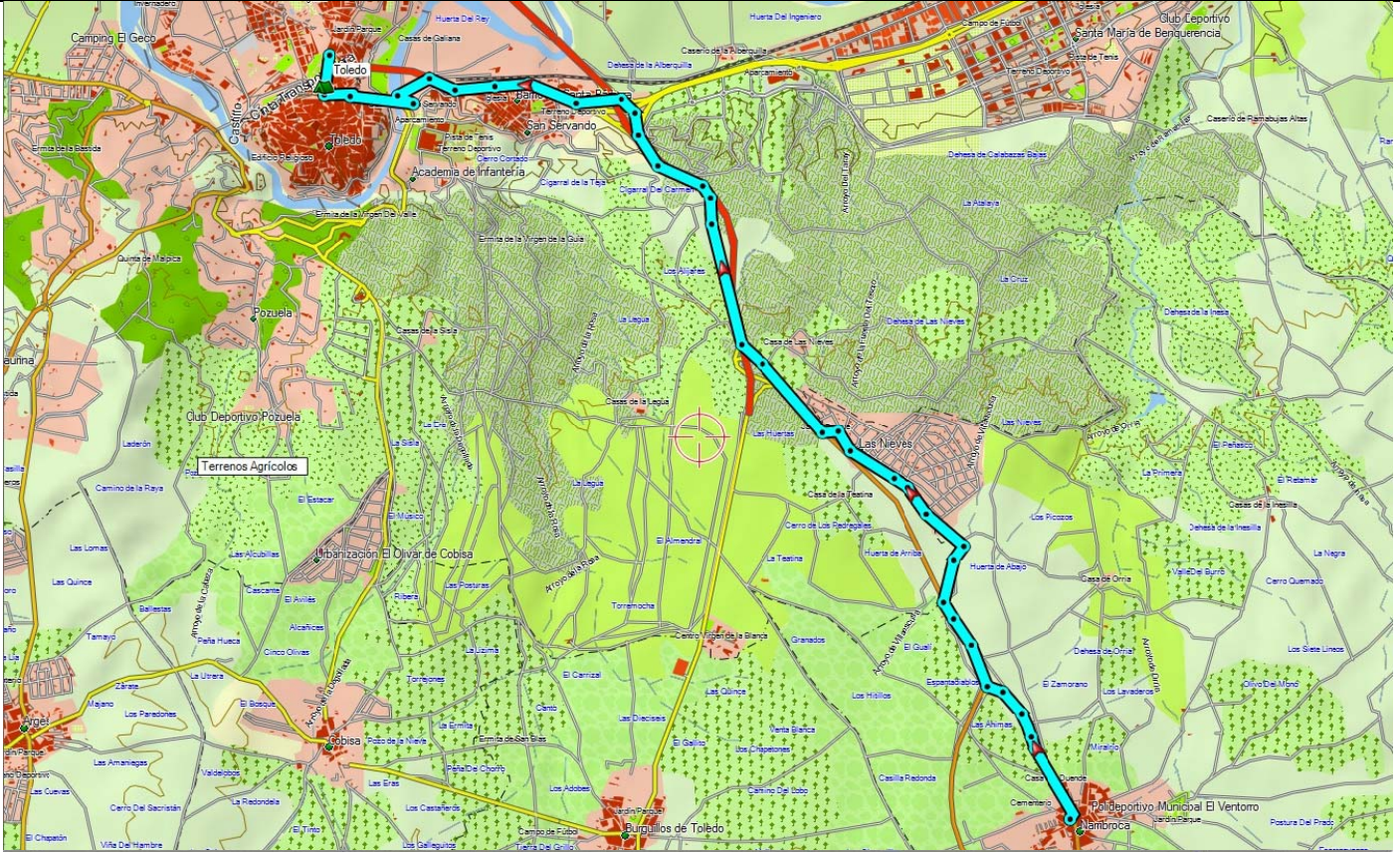




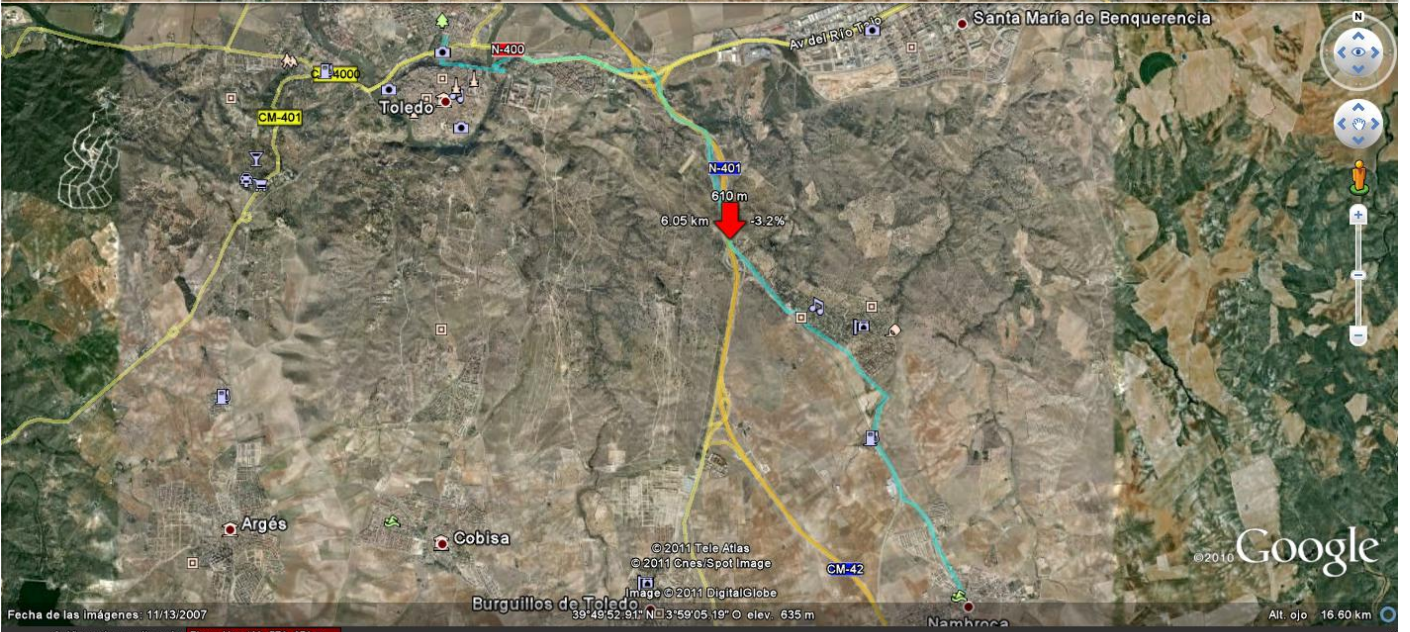
Fecha de las imágenes: 11/13/2007  
 Gráfico: min., media, max. Elevación: 665, 684, 731 m  
 Total de intervalo: Distancia: 9.39 km Incremento/pérdida de elevación: 57.5 m, -107 m Pendiente máxima: 3.6%, -6.3% Pendiente media: 1.5%, -1.9%



Horaris		Lloc	Quilometratges		Perfil
Hora	Temps		Parcials	Acumulat	
13:58	38'	Nambroca Toledo	9,4	74,3	
14:48	50'		12,4	86,7	

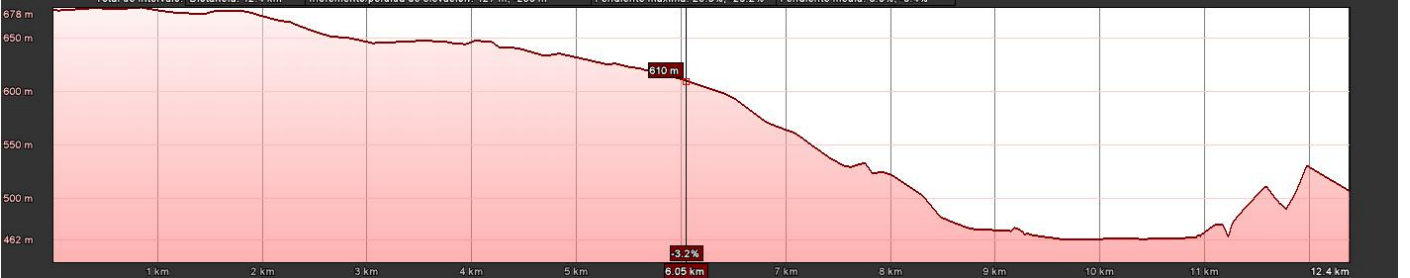




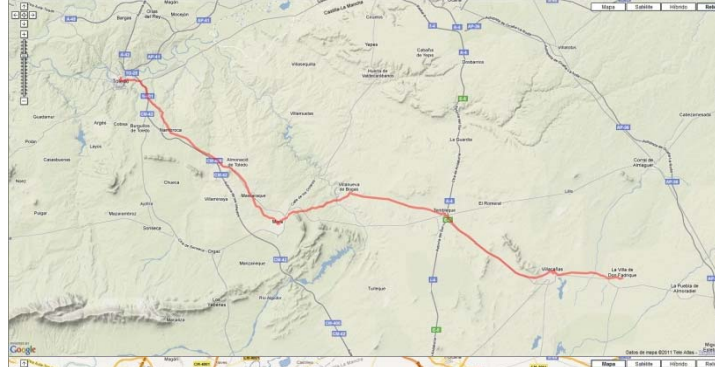
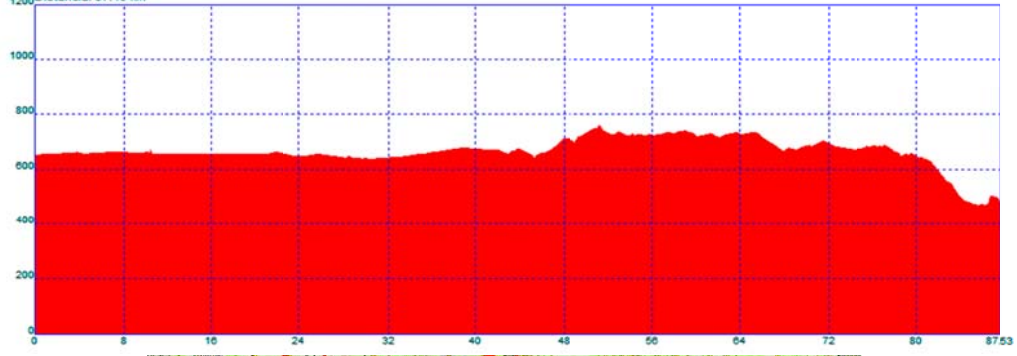


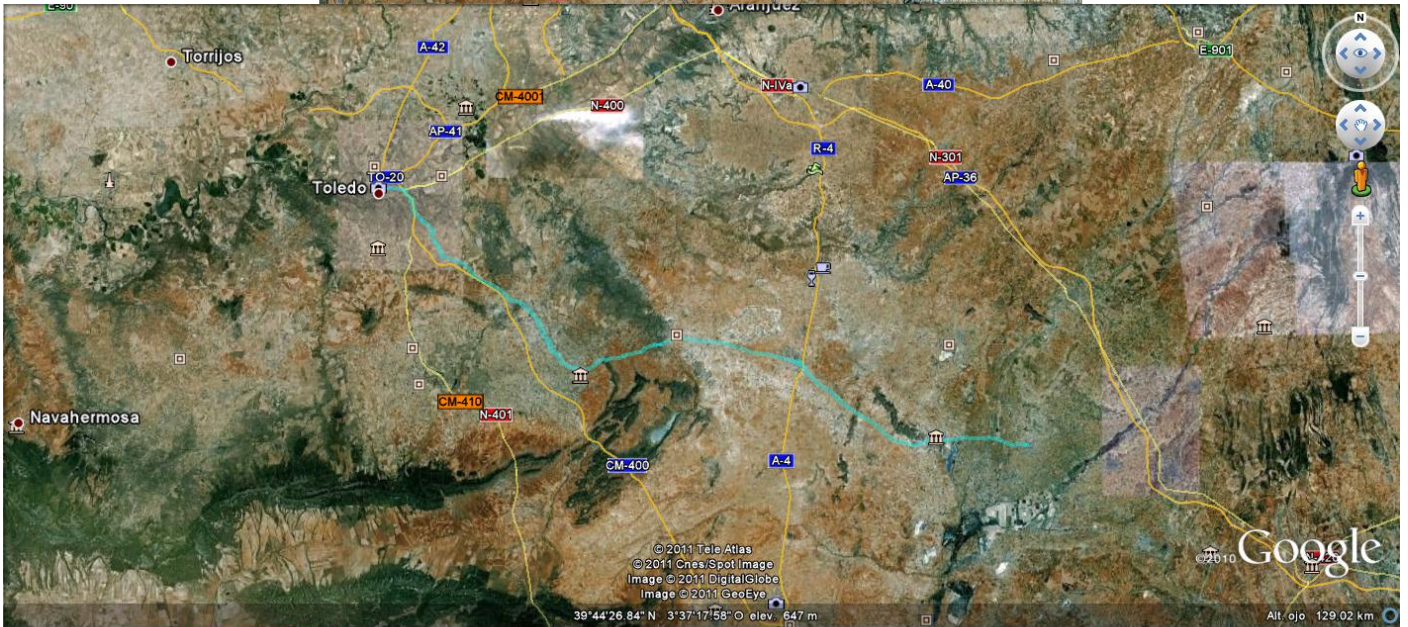
Fecha de las imágenes: 11/13/2007

Gráfico: min., media, max. Elevación: 462, 576, 678 m  
 Total de intervalo: Distancia: 12.4 km Incremento/pérdida de elevación: 127 m, -296 m Pendiente máxima: 29.5%, -23.2% Pendiente media: 3.0%, -3.4%



La villa de don fadique - Toledo  
Altura máxima: 759.56 mts - Altura mínima: 466.34 mts - Desnivell acumulat: 418.19 mts  
Distància: 87.49 km





La Villa de don Fadrique - Villacañas.KML



Villacañas - Tembleque.KML



Tembleque - Villanueva de Bogas.KML



Villanueva de Bogas - Mora.KML



Mora - Almonacid de Toledo.KML



Almonacid de Toledo - Nambroca.KML



Nambroca - Toledo.KML



05 La Villa de don Fadrique - Toledo.KML