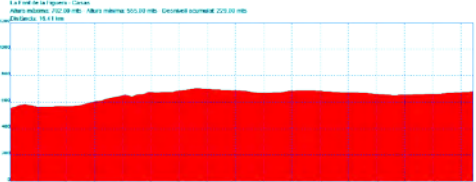
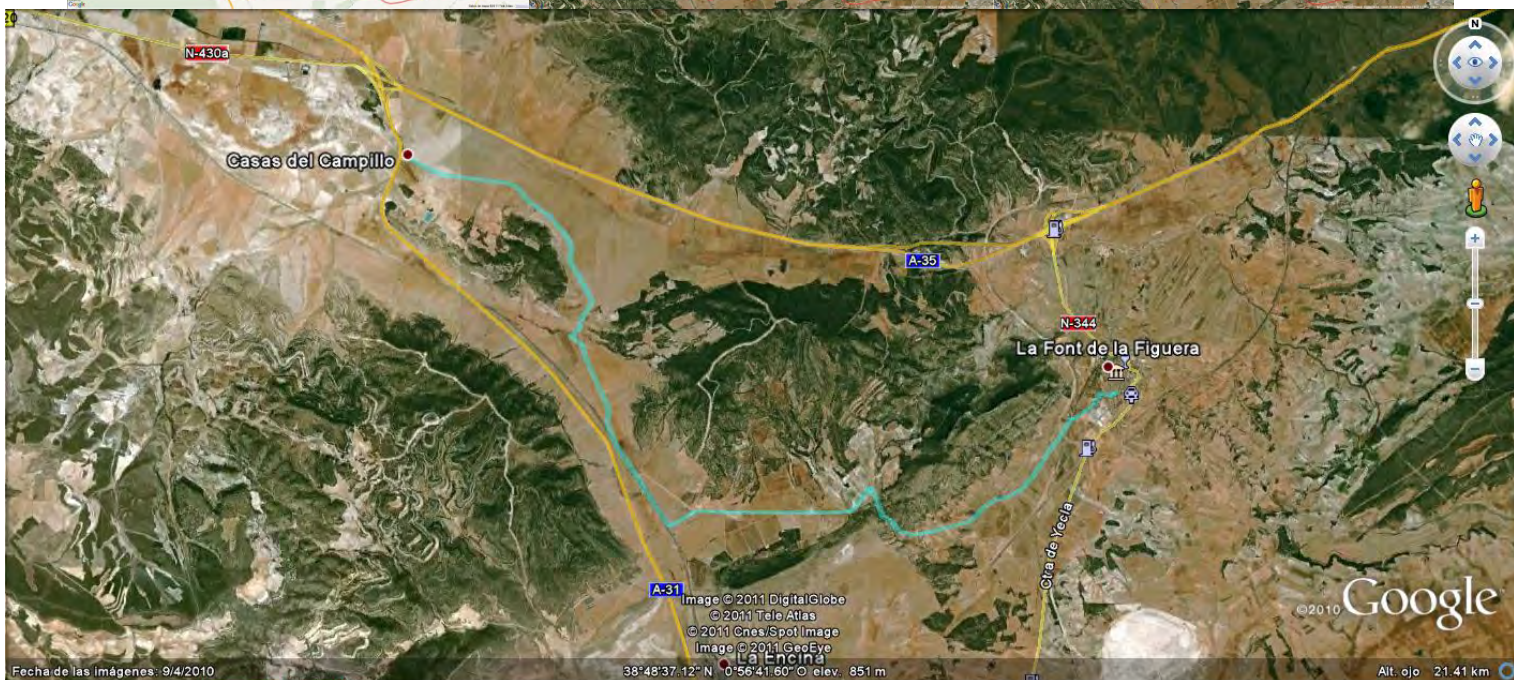
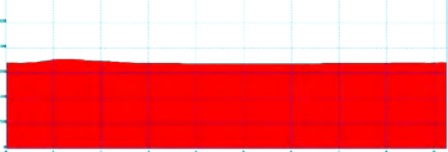
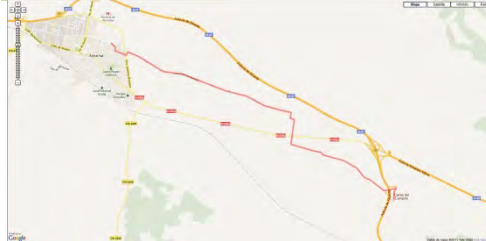


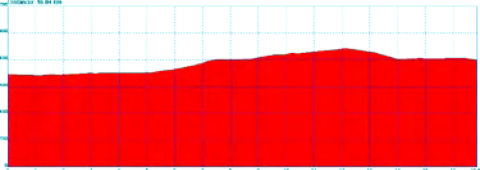
Etapa segon: De La Font de la Figuera a Chinchilla (Passem a Castella La Mancha)

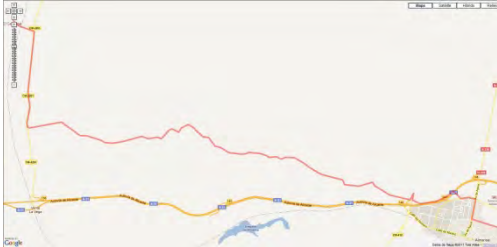
Horaris		Lloc	Quilometratges		Perfil
Hora	Temps		Parcials	Acumulat	
8:15	0	Font de la Figuera	0,0	0,0	
9:23	1,08'	Casas del Campillo	17,0	17,0	

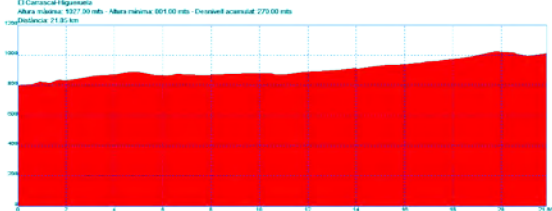


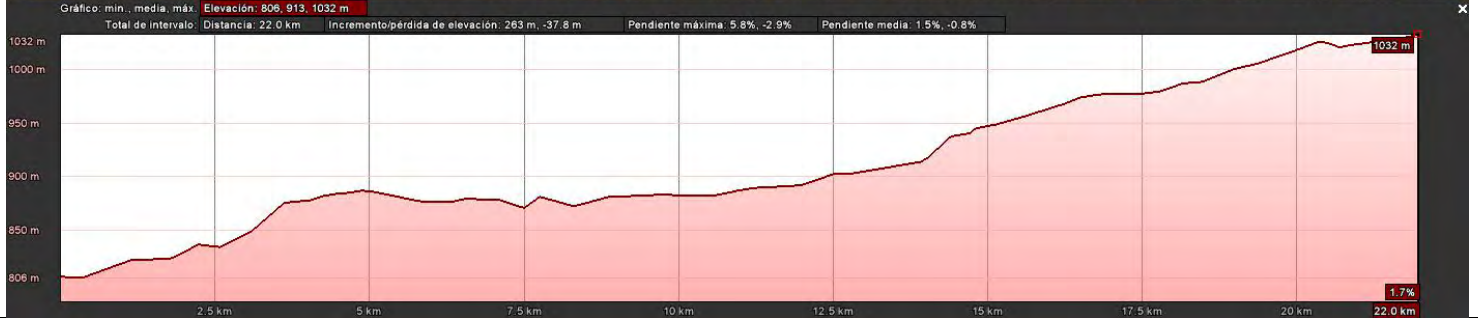
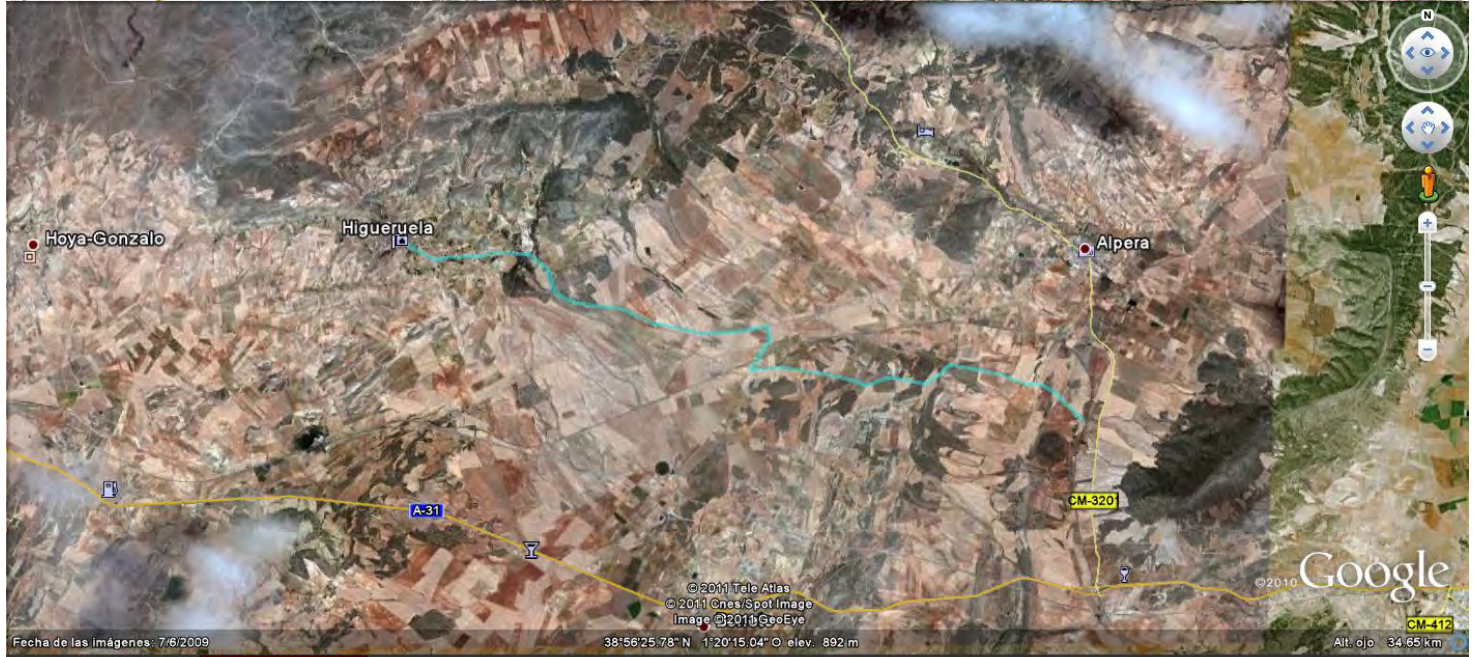
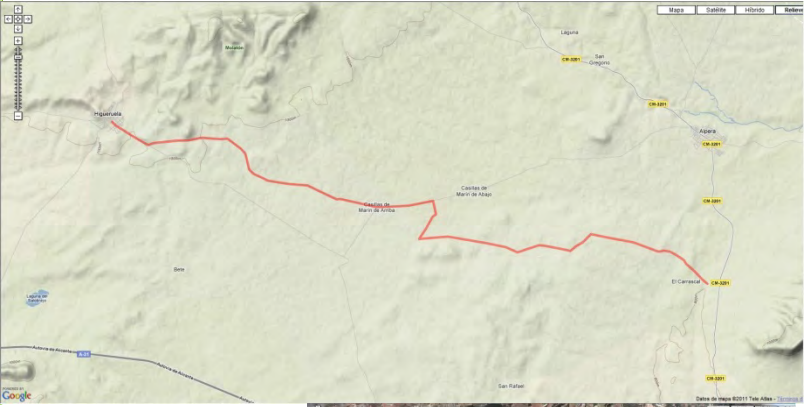
Horaris		Lloc	Quilometratges		Perfil
Hora	Temps		Parcials	Acumulat	
9:23	1,08'	Casas del Campillo Almansa	17,0	17,0	
10:01	38'		9,4	26,4	

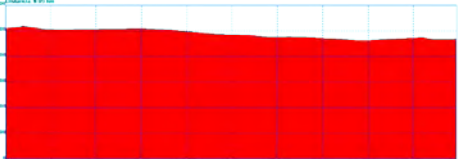


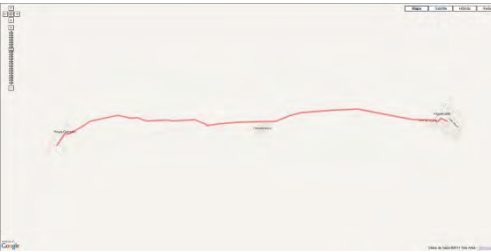
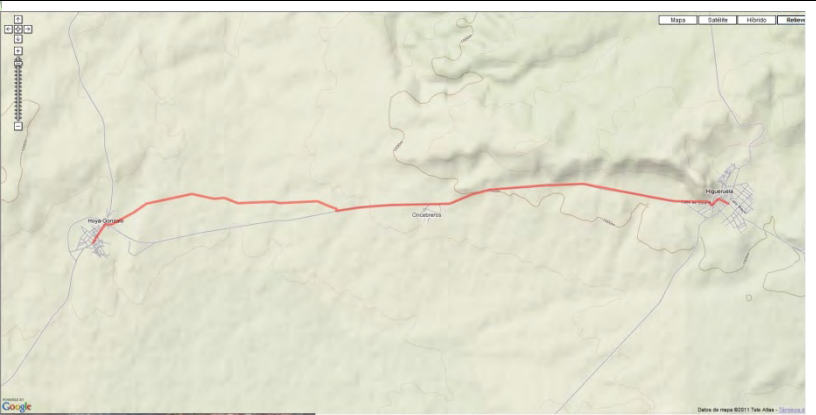
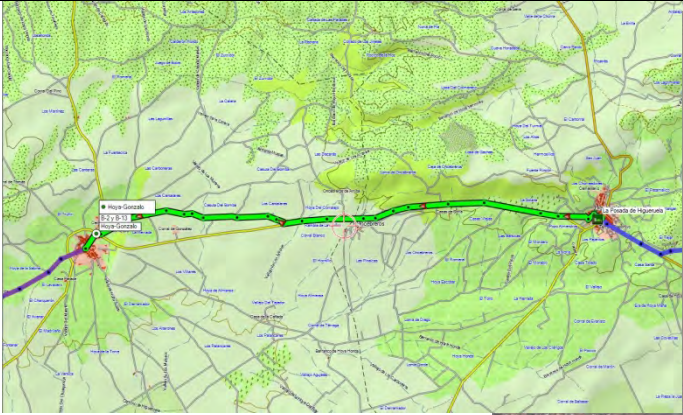
Horaris		Lloc	Quilometratges		Perfil
Hora	Temps		Parcials	Acumulat	
10:01	38'	Almansa El Carrascal	9,4	26,4	
10:09	1,08'		17,0	43,4	

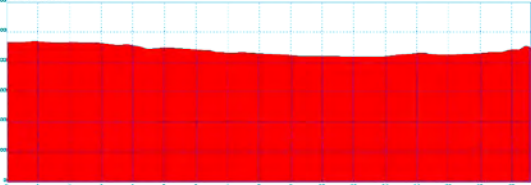


Horaris		Lloc	Quilometratges		Perfil
Hora	Temps		Parcials	Acumulat	
10:09	1,08'	El Carrascal Higueruela	17,0	43,4	
11:37	1,28'		22,0	65,4	



Horaris		Lloc	Quilometratges		Perfil
Hora	Temps		Parcials	Acumulat	
11:37	1,28'	Higueruela Hoya Gonzalo	22,0	65,4	
12:19	42		10,3	75,4	



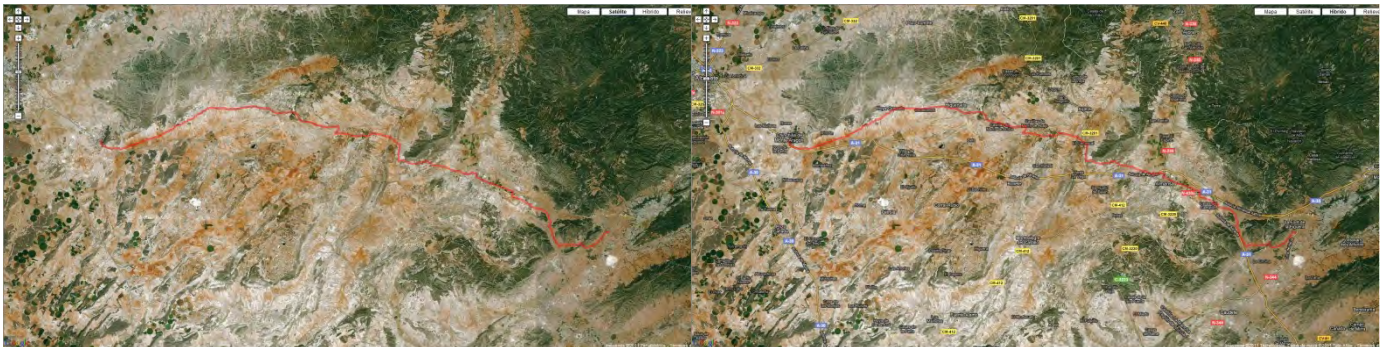
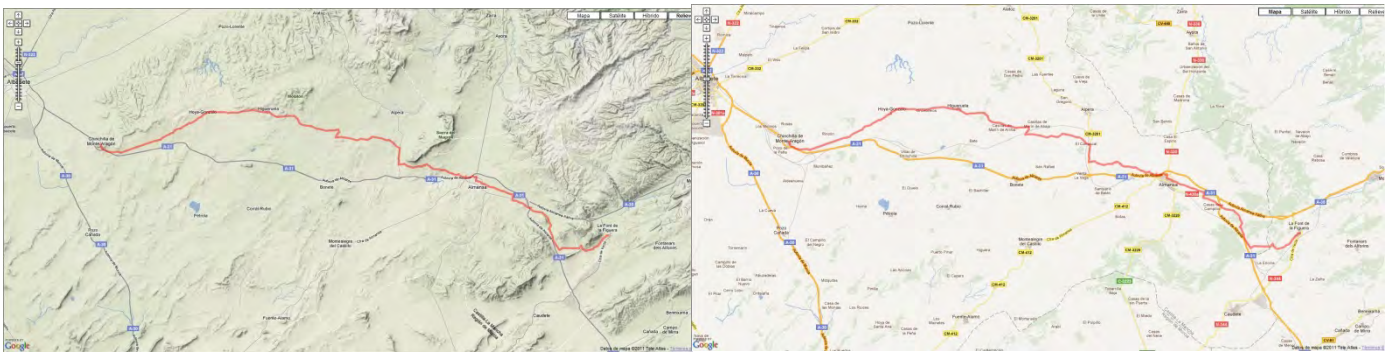
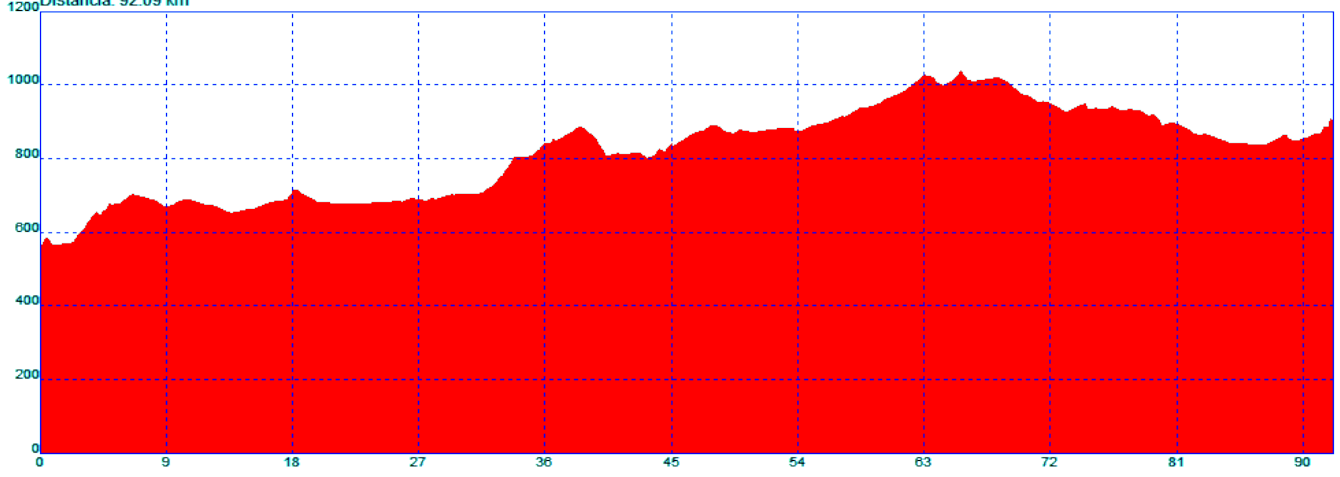
Horaris		Quilometratges			Perfil
Hora	Temps	Lloc	Parcials	Acumulat	
12:19	42'	Hoya Gonzalo Chinchilla	10,3	75,4	
13:26	1,07'		16,6	92,0	



La Font de la Figuera - Chinchilla

Altura màxima: 1039.00 mts - Altura mínima: 555.00 mts - Desnivell acumulat: 926.00 mts

Distància: 92.09 km





 02 La Font de la Figuera- Casas.KML


 02 Casas-Almansa.KML

 02 Almansa-El carrascal.KML

 02 El Carrascal-Higuera.KML

 02 Higuera-Hoya Gonzalo.KML

 02 Hoya Gonzalo-Chinchilla.KML

 02 La Font de la Figuera- Chinchilla.KML